



Priced

\$329,800

Elevation F - Artistic Rendering for
Representation Purposes Only

1,885 Sq Ft

2.0 Story

3 Beds

2.5 Baths

2 Car Garage

Primary Bedroom: Up

About 267 Crossvine Street

- Located in a cul-de-sac, this home welcomes you with a foyer that includes access to a convenient half-bath, and flows seamlessly into a spacious great room that opens to the kitchen and dining area.
- The kitchen is equipped with countertop bar seating, "Arctic White" quartz countertops, horizontal picket backsplash, shaker cabinets, a pantry, and stainless steel appliances, including a microwave, dishwasher, and smooth top range.
- The dining area opens up to a rear grill patio through sliding doors, creating an ideal space for

...Read More Online

About The Community.

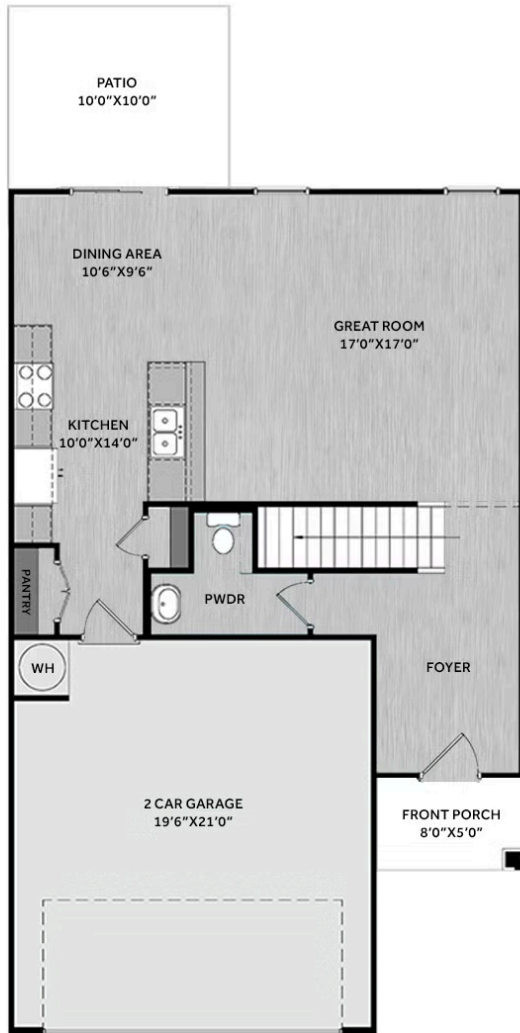
Conveniently located just minutes from **I-95** and the future **I-42** (Hwy 70), Emily Gardens offers easy access to everything Johnston County and beyond has to offer. Enjoy the tranquility of rural living while being a short drive from urban excitement—**Raleigh** is only about 30-40 minutes away for work, dining, or entertainment.

Residents of Emily Gardens enjoy a delightful array of nearby attractions that capture the area's unique blend of history, culture, shopping, and outdoor fun. Just down the road, Hinnant Family Vineyards—North Carolina's largest and oldest muscadine grape vineyard—invites you to relaxed wine tastings.

...Read More Online

Prices, plans, dimensions, features, specifications, materials, and availability of homes or communities are subject to change without notice or obligation. Illustrations are artists depictions only and may differ from completed improvements. All prices subject to change without notice. Please contact your sales associate before writing an offer.

FIRST FLOOR



SECOND FLOOR

