



45 Fiddleneck Court
Selma, NC 27576

EMILY GARDENS - GRAHAM

CONTACT OUR NEW HOME SPECIALISTS

MAGGIE & JESSICA

Call Us @ 910-405-8311

info@cavinessandcates.com



Priced

\$339,500

Elevation A - Artistic Rendering for Representation Purposes Only

2,058 Sq Ft

2.0 Story

3 Beds

2.5 Baths

2 Car Garage

Primary Bedroom: Up

About 45 Fiddleneck Court

- The dining room showcases a painted accent wall in "Cityscape" and offers a convenient walk-through to the kitchen, with a half-bath located just off the foyer.
- The open layout connects the kitchen, dining area, and great room, with access to the rear grill patio through the breakfast area and garage access from the great room.
- The kitchen includes an eat-in island with bar seating, "Dephi" quartz countertop, white shaker cabinets, a pantry, and stainless steel appliances, including a microwave, dishwasher, and smooth top range.

...Read More Online

About The Community.

Conveniently located just minutes from **I-95** and the future **I-42** (Hwy 70), Emily Gardens offers easy access to everything Johnston County and beyond has to offer. Enjoy the tranquility of rural living while being a short drive from urban excitement—**Raleigh** is only about 30-40 minutes away for work, dining, or entertainment.

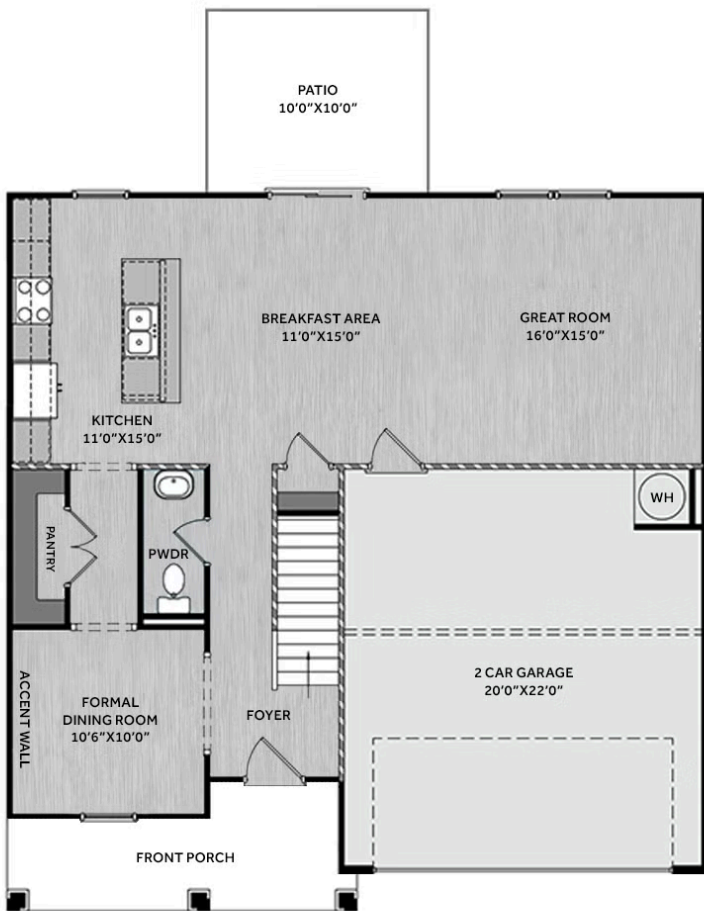
Residents of Emily Gardens enjoy a delightful array of nearby attractions that capture the area's unique blend of history, culture, shopping, and outdoor fun. Just down the road, Hinnant Family Vineyards—North Carolina's largest and oldest muscadine grape vineyard—invites you to relaxed wine tastings.

...Read More Online

Prices, plans, dimensions, features, specifications, materials, and availability of homes or communities are subject to change without notice or obligation. Illustrations are artists depictions only and may differ from completed improvements. All prices subject to change without notice. Please contact your sales associate before writing an offer.



FIRST FLOOR



SECOND FLOOR

