



Priced

\$389,900

Elevation F

1,863 Sq Ft

1.0 Story

3 Beds

2.0 Baths

2 Car Garage

Primary Bedroom: Down

About 102 Sea Breeze Court

- Open kitchen with dining area with views to the backyard, island with sink overlooking the great room, granite countertops in "New Caledonia", white shaker cabinets, and subway tile backsplash in "Arctic White" set in a herringbone pattern; Stainless steel microwave, dishwasher, and smooth top range.
- Great room with gas log fireplace with decorative mantle and granite surround in "Absolute Black" and sliding door access to rear covered porch.
- Separate laundry room with washer/dryer connections and tile flooring, and walk-in pantry at entryway from the garage.

...Read More Online

About The Community.

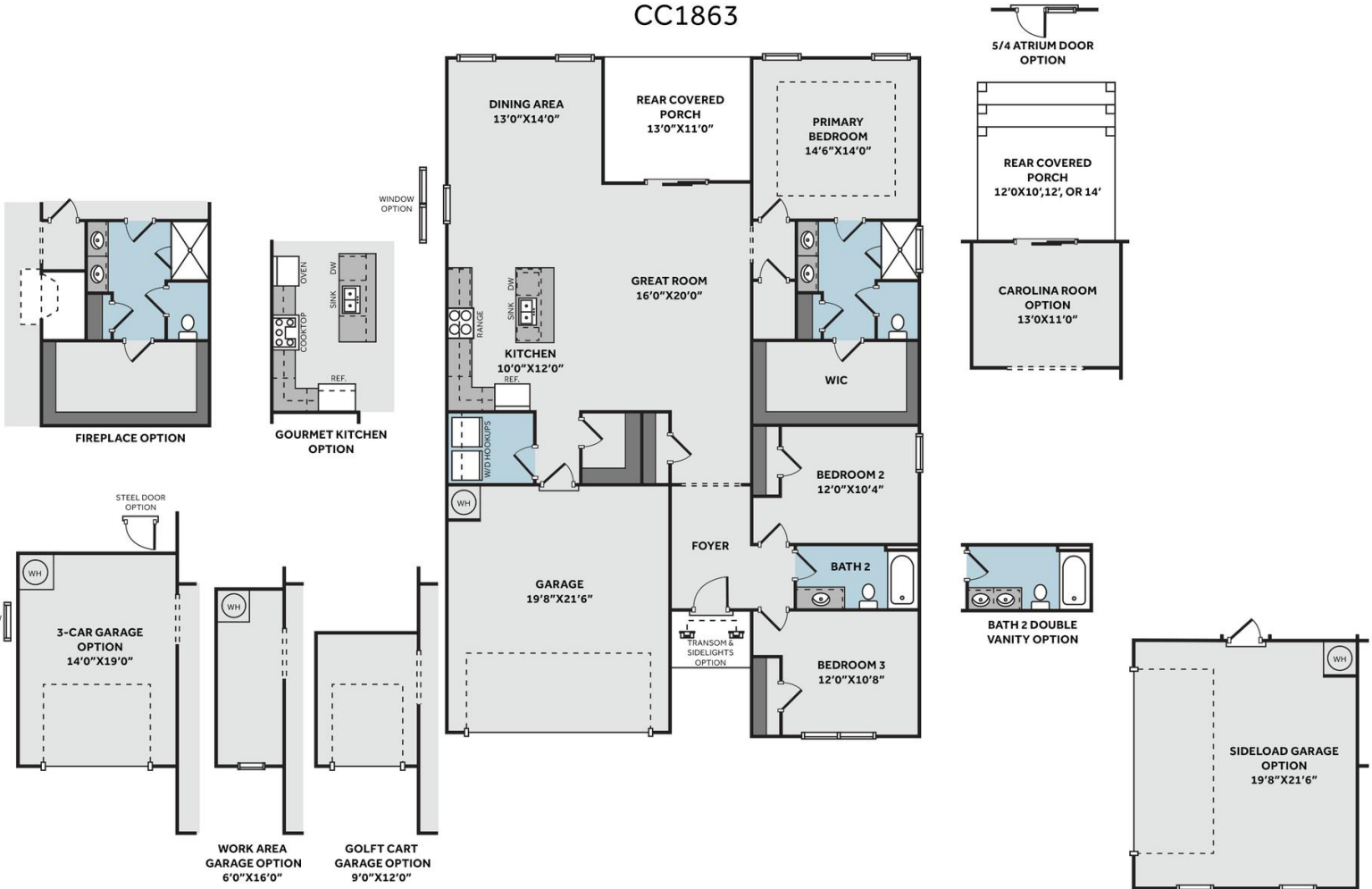
Situated just across the bridge from Topsail Island off of NC Hwy 172, Oyster Landing is in the perfect location; it's just a few miles from the beach and the back gate of Camp Lejeune. Furthermore, you can enjoy the day to day small-town life here, and be in Wilmington or Jacksonville, North Carolina in about 30 minutes.

- Beach 6 miles
- Back gate of Camp Lejeune 6 miles
- MARSOC Complex 5 miles

...Read More Online

Prices, plans, dimensions, features, specifications, materials, and availability of homes or communities are subject to change without notice or obligation. Illustrations are artists depictions only and may differ from completed improvements. All prices subject to change without notice. Please contact your sales associate before writing an offer.

THE DOGWOOD
CC1863



Prices, plans, dimensions, features, specifications, materials, and availability of homes or communities are subject to change without notice or obligation. Illustrations are artists depictions only and may differ from completed improvements. All prices subject to change without notice. Please contact your sales associate before writing an offer.

