



Priced

\$434,900

2,522 Sq Ft

2.0 Story

5 Beds

3.0 Baths

2 Car Garage

Primary Bedroom: Up

About 103 Sea Breeze Court

***\$10,000 Builder Credit - to be used towards closing costs, rate buydown, or design studio upgrades! Conditions apply. Please see builder representative for details.**

- French door access to flex room off of the foyer.
- Kitchen with island is open to breakfast area and great room, white shaker cabinets, quartz

...Read More Online

About The Community.

Situated just across the bridge from Topsail Island off of NC Hwy 172, Oyster Landing is in the perfect location; it's just a few miles from the beach and the back gate of Camp Lejeune. Furthermore, you can enjoy the day to day small-town life here, and be in Wilmington or Jacksonville, North Carolina in about 30 minutes.

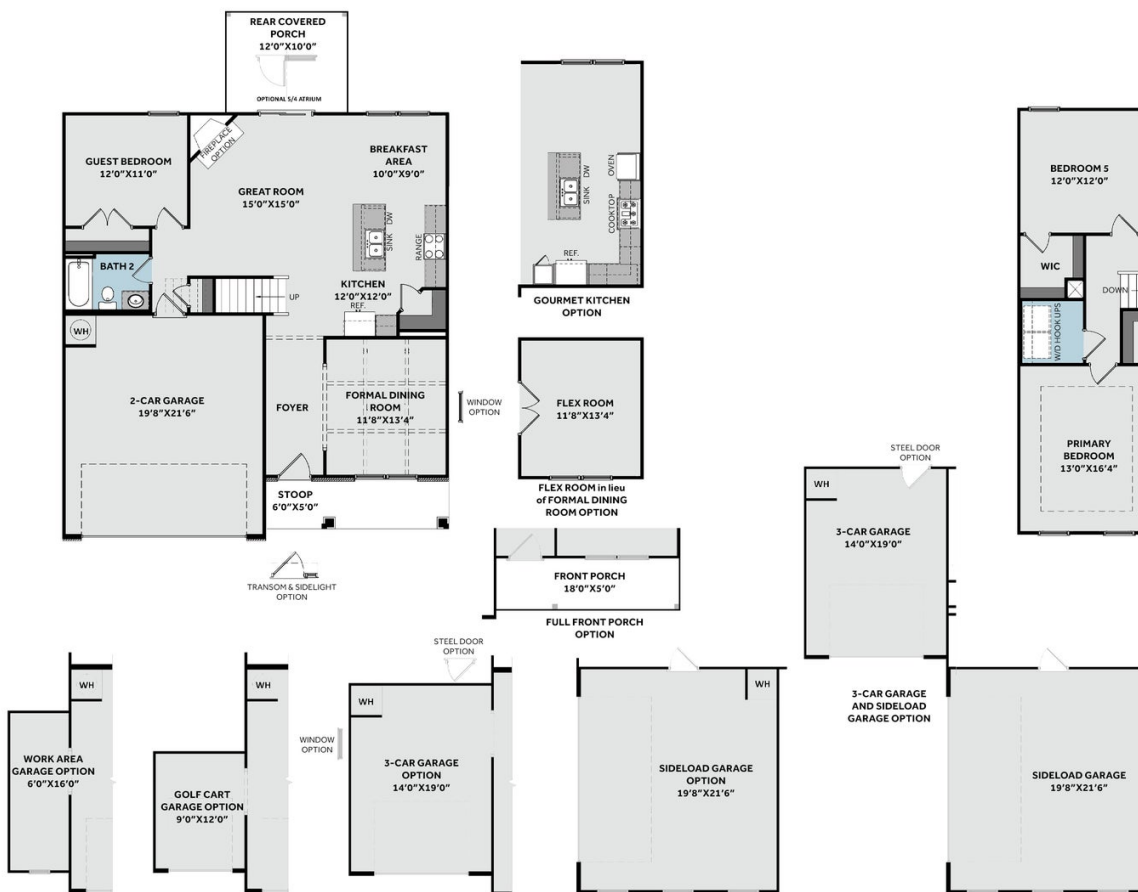
- Beach 6 miles
- Back gate of Camp Lejeune 6 miles
- MARSOC Complex 5 miles

...Read More Online

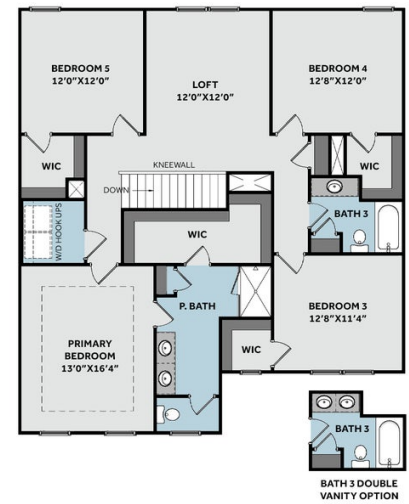
Prices, plans, dimensions, features, specifications, materials, and availability of homes or communities are subject to change without notice or obligation. Illustrations are artists depictions only and may differ from completed improvements. All prices subject to change without notice. Please contact your sales associate before writing an offer.

THE PAMLICO
CC2522

FIRST FLOOR



SECOND FLOOR



Prices, plans, dimensions, features, specifications, materials, and availability of homes or communities are subject to change without notice or obligation. Illustrations are artists depictions only and may differ from completed improvements. All prices subject to change without notice. Please contact your sales associate before writing an offer.

