



## Priced

# \$434,900

Elevation F

2,522 Sq Ft

2.0 Story

5 Beds

3.0 Baths

2 Car Garage

Primary Bedroom: Up

## About 109 Sea Breeze Court

- French door access to first-floor flex room.
- Kitchen with island is open to breakfast area and great room, white shaker cabinets, granite countertops in "Luna Pearl", natural stone mosaic herringbone backsplash, and corner pantry; Stainless steel microwave, dishwasher, and smooth top range.
- Great room with corner fireplace with decorative mantle and granite surround in "Absolute Black"; Access to rear porch through sliding door.
- Guest room located on first floor with hall access to full bathroom with vanity, tub/shower

...Read More Online

## About The Community.

Situated just across the bridge from Topsail Island off of NC Hwy 172, Oyster Landing is in the perfect location; it's just a few miles from the beach and the back gate of Camp Lejeune. Furthermore, you can enjoy the day to day small-town life here, and be in Wilmington or Jacksonville, North Carolina in about 30 minutes.

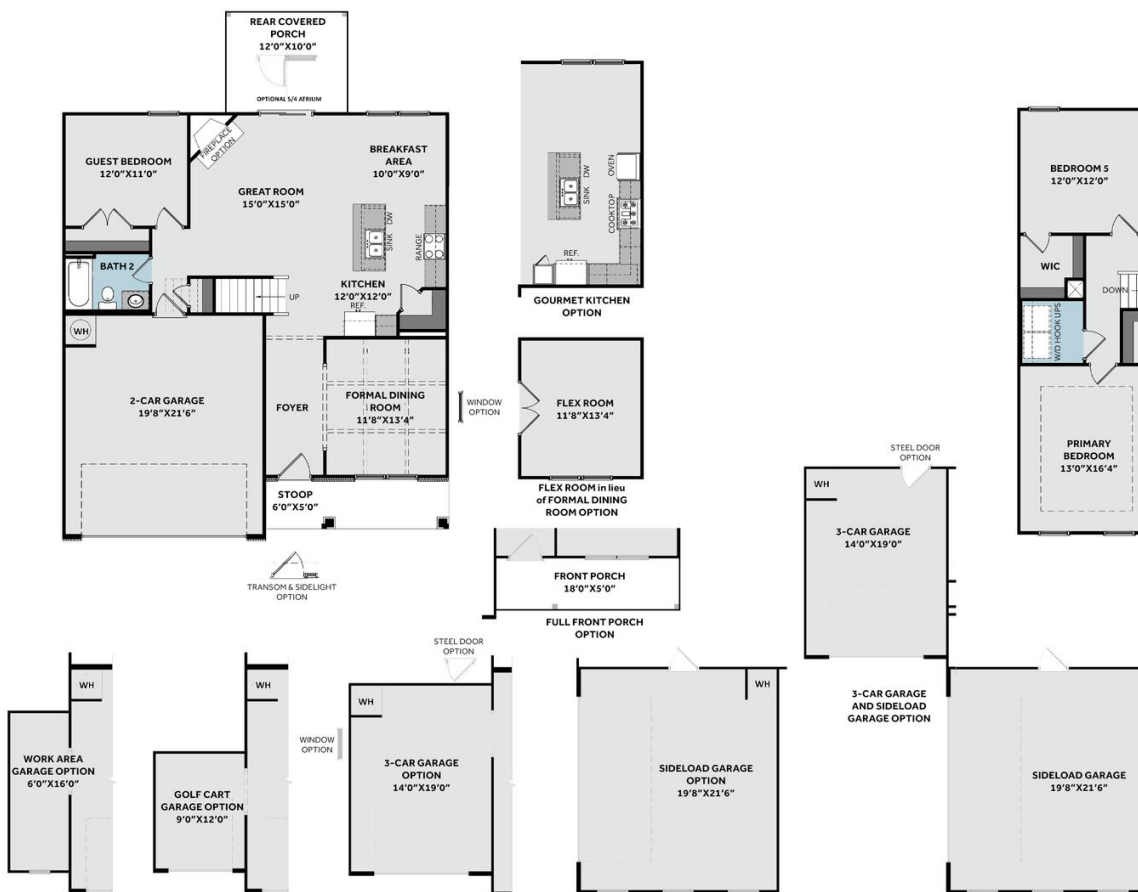
- Beach 6 miles
- Back gate of Camp Lejeune 6 miles
- MARSOC Complex 5 miles

...Read More Online

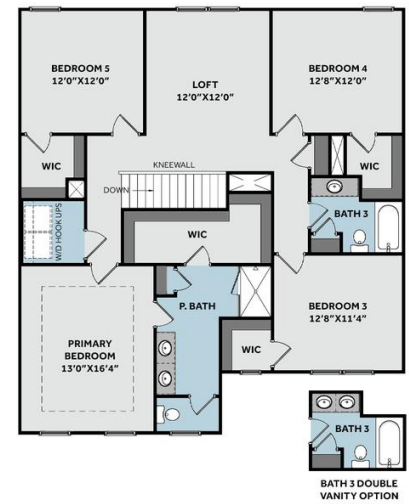
Prices, plans, dimensions, features, specifications, materials, and availability of homes or communities are subject to change without notice or obligation. Illustrations are artists depictions only and may differ from completed improvements. All prices subject to change without notice. Please contact your sales associate before writing an offer.

**THE PAMLICO**  
CC2522

**FIRST FLOOR**



**SECOND FLOOR**



Prices, plans, dimensions, features, specifications, materials, and availability of homes or communities are subject to change without notice or obligation. Illustrations are artists depictions only and may differ from completed improvements. All prices subject to change without notice. Please contact your sales associate before writing an offer.

