



217 Admiral Court
Sneads Ferry, NC 28460
OYSTER LANDING - DRAYTON

CONTACT OUR NEW HOME SPECIALISTS
MAGGIE & JENN
Call Us @ 910-405-8311
maggie@cavinessandcates.com



Priced

\$319,943

Elevation E

2,325 Sq Ft

2.0 Story

4 Beds

2.5 Baths

2 Car Garage

Master Bedroom: Up

About 217 Admiral Court

- Kitchen features granite countertops, subway tile backsplash, white cabinets, stainless steel microwave, dishwasher, and smooth cooktop range, satin nickel finishes, large island, corner pantry, and window over kitchen sink with views to the backyard
- Great room with gas log fireplace
- Covered porch access from breakfast area
- Formal dining room with coffered ceiling and wainscoting detail
- Half bath with pedestal sink and oval mirror

...Read More Online

About The Community.

Situated just across the bridge from Topsail Island off of NC Hwy 172, Oyster Landing is in the perfect location; it's just a few miles from the beach and the back gate of Camp Lejeune. Furthermore, you can enjoy the day to day small town life here, and be in Wilmington or Jacksonville, North Carolina in about 30 minutes

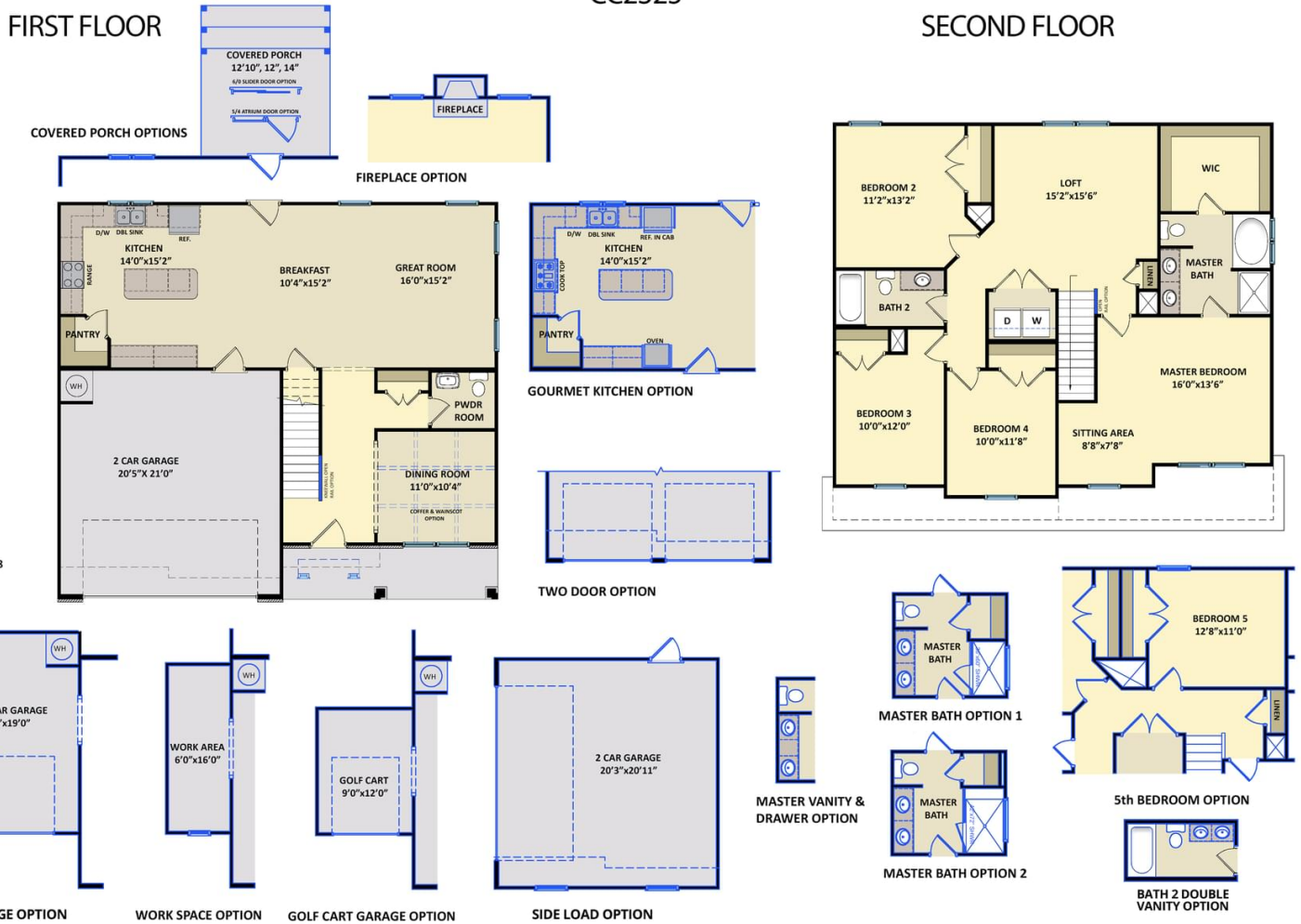
- Beach 6 miles
- Back gate of Camp Lejeune 6 miles
- MARSOC Complex 5 miles

...Read More Online

Prices, plans, dimensions, features, specifications, materials, and availability of homes or communities are subject to change without notice or obligation. Illustrations are artists depictions only and may differ from completed improvements. All prices subject to change without notice. Please contact your sales associate before writing an offer.



The Drayton
CC2325



Prices, plans, dimensions, features, specifications, materials, and availability of homes or communities are subject to change without notice or obligation. Illustrations are artists depictions only and may differ from completed improvements. All prices subject to change without notice. Please contact your sales associate before writing an offer.

