



406 Anchor Hitch Court  
Sneads Ferry, NC 28460  
OYSTER LANDING - DRAYTON

CONTACT OUR NEW HOME SPECIALISTS  
**MAGGIE & JESSICA**  
Call Us @ 910-405-8311  
info@cavinessandcates.com



## Priced

# \$288,780

Elevation E - Archived 2/10/2022

2,325 Sq Ft

2.0 Story

4 Beds

2.5 Baths

2 Car Garage

Primary Bedroom: Up

## About 406 Anchor Hitch Court

- Kitchen features stainless steel microwave, dishwasher, and smooth cooktop range, large island, corner pantry, and window over kitchen sink with views to the backyard
- Covered porch access from breakfast area
- Formal dining room
- Half bath with pedestal sink and oval mirror
- Staircase with metal balusters
- Family/media room, linen closet, and laundry room located at top of stairs

...Read More Online

## About The Community.

Situated just across the bridge from Topsail Island off of NC Hwy 172, Oyster Landing is in the perfect location; it's just a few miles from the beach and the back gate of Camp Lejeune. Furthermore, you can enjoy the day to day small-town life here, and be in Wilmington or Jacksonville, North Carolina in about 30 minutes.

- Beach 6 miles
- Back gate of Camp Lejeune 6 miles
- MARSOC Complex 5 miles

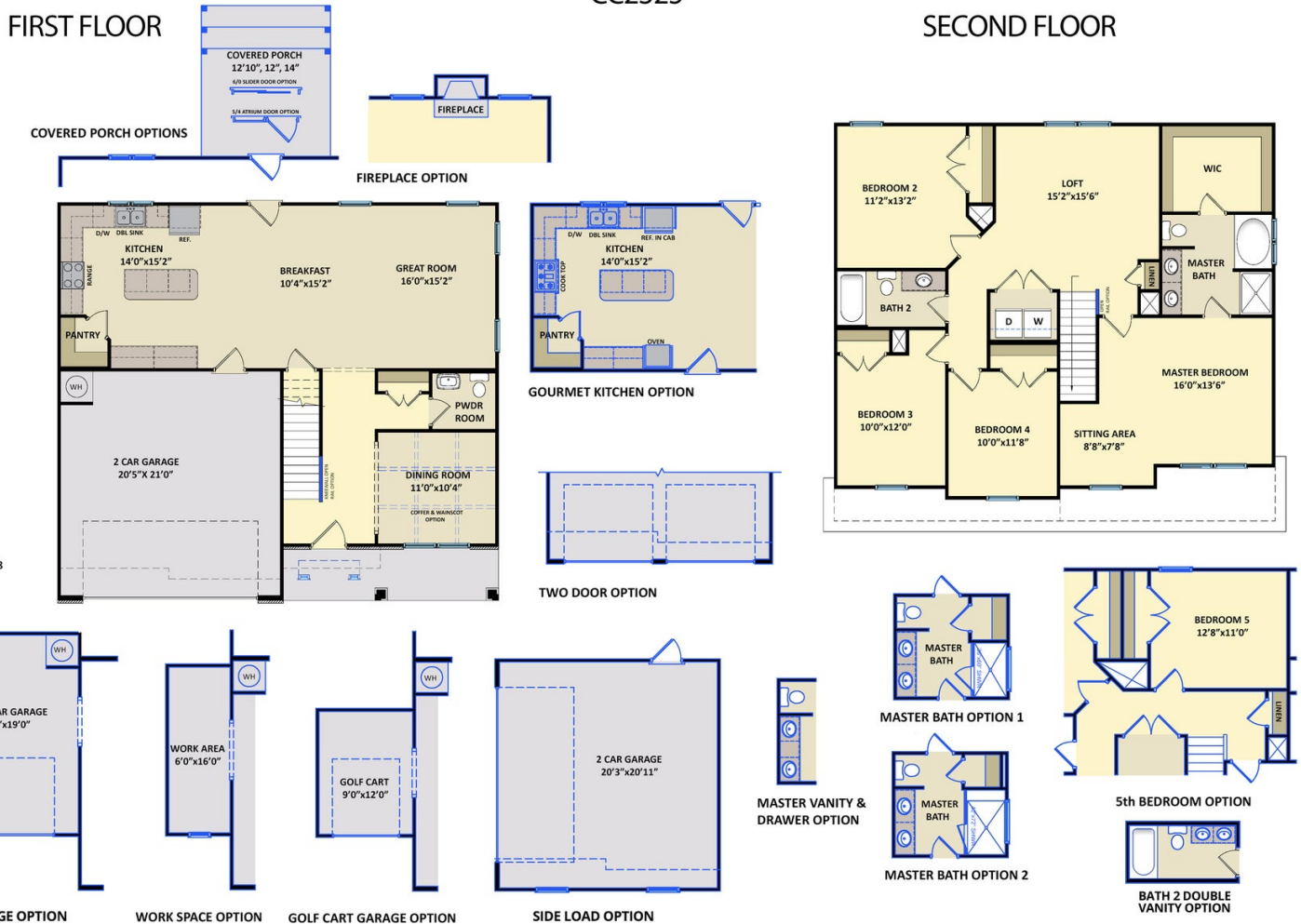
...Read More Online

Prices, plans, dimensions, features, specifications, materials, and availability of homes or communities are subject to change without notice or obligation. Illustrations are artists depictions only and may differ from completed improvements. All prices subject to change without notice. Please contact your sales associate before writing an offer.



ARCHIVED 2021

The Drayton  
CC2325



Prices, plans, dimensions, features, specifications, materials, and availability of homes or communities are subject to change without notice or obligation. Illustrations are artists depictions only and may differ from completed improvements. All prices subject to change without notice. Please contact your sales associate before writing an offer.

