



424 Anchor Hitch Court
Sneads Ferry, NC 28460

OYSTER LANDING - DRAYTON

CONTACT OUR NEW HOME SPECIALISTS

MAGGIE & JESSICA

Call Us @ 910-405-8311

info@cavinessandcates.com



Priced

\$346,501

Elevation F - ARCHIVED 3/29/23

2,325 Sq Ft

2.0 Story

4 Beds

2.5 Baths

2 Car Garage

Primary Bedroom: Up

About 424 Anchor Hitch Court

- Kitchen features granite countertops, arctic white subway tile backsplash, white shaker cabinets, stainless steel microwave, dishwasher, and smooth cooktop range, satin nickel finishes, large island, corner pantry, and window over kitchen sink with views to the backyard
- Breakfast area with access to covered porch
- Great room with gas log fireplace with decorative mantle and granite surround
- Formal dining room with coffered ceiling and wainscoting detail
- Half bath with pedestal sink and oval mirror

...Read More Online

About The Community.

Situated just across the bridge from Topsail Island off of NC Hwy 172, Oyster Landing is in the perfect location; it's just a few miles from the beach and the back gate of Camp Lejeune. Furthermore, you can enjoy the day to day small-town life here, and be in Wilmington or Jacksonville, North Carolina in about 30 minutes.

- Beach 6 miles
- Back gate of Camp Lejeune 6 miles
- MARSOC Complex 5 miles

...Read More Online

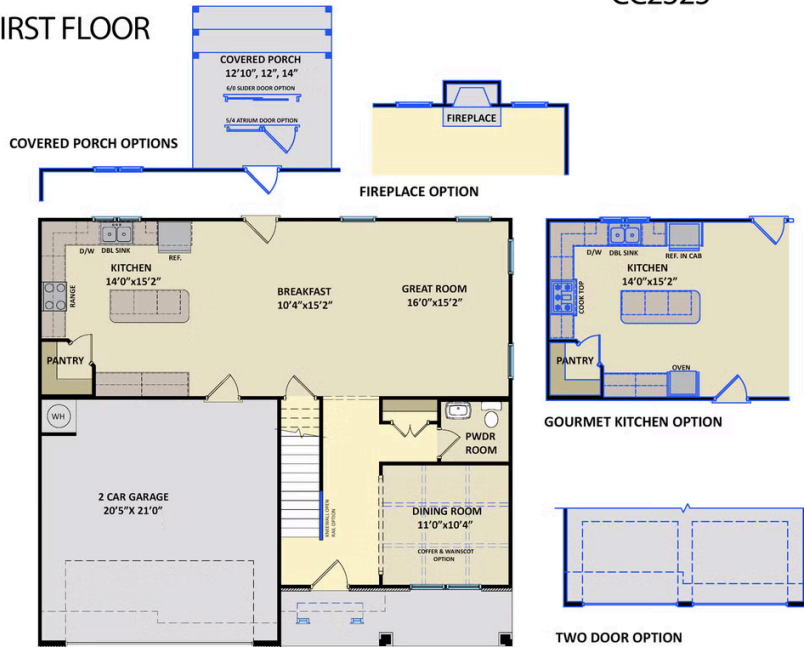
Prices, plans, dimensions, features, specifications, materials, and availability of homes or communities are subject to change without notice or obligation. Illustrations are artists depictions only and may differ from completed improvements. All prices subject to change without notice. Please contact your sales associate before writing an offer.



ARCHIVED 8/22/2023

The Drayton CC2325

FIRST FLOOR



SECOND FLOOR

