



506 Transom Way
Sneads Ferry, NC 28460
OYSTER LANDING - ABERDEEN

CONTACT OUR NEW HOME SPECIALISTS
MAGGIE & JENN
Call Us @ 910-405-8311
maggie@cavinessandcates.com



Priced
\$289,561

Elevation D
2,234 Sq Ft
2.0 Story
3 Beds
2.5 Baths
2 Car Garage
Master Bedroom: Up

About 506 Transom Way

- Office with barn door entry and walk-in-closet on first floor
- Eat-in kitchen features granite countertops, subway tile backsplash, white cabinets, stainless steel microwave, dishwasher, and smooth top range, satin nickel finishes, island with sink overlooking the great room, and corner pantry
- Covered porch creates the perfect outdoor space
- Great room with gas log fireplace
- Half bath with pedestal sink and oval mirror

...Read More Online

About The Community.

Situated just across the bridge from Topsail Island off of NC Hwy 172, Oyster Landing is in the perfect location; it's just a few miles from the beach and the back gate of Camp Lejeune. Furthermore, you can enjoy the day to day small town life here, and be in Wilmington or Jacksonville, North Carolina in about 30 minutes

- Beach 6 miles
- Back gate of Camp Lejeune 6 miles
- MARSOC Complex 5 miles

...Read More Online

Prices, plans, dimensions, features, specifications, materials, and availability of homes or communities are subject to change without notice or obligation. Illustrations are artists depictions only and may differ from completed improvements. All prices subject to change without notice. Please contact your sales associate before writing an offer.

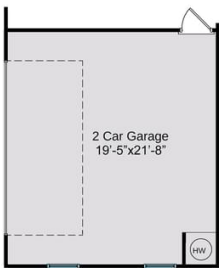
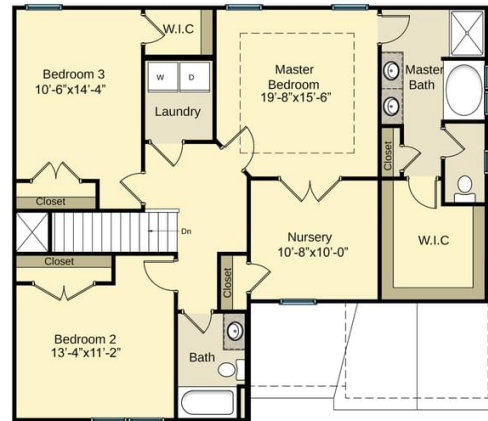


The Aberdeen
CC2234

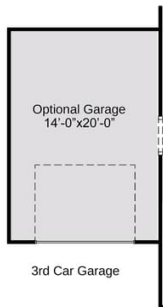
FIRST FLOOR



SECOND FLOOR



Side Load Garage



3rd Car Garage

Prices, plans, dimensions, features, specifications, materials, and availability of homes or communities are subject to change without notice or obligation. Illustrations are artists depictions only and may differ from completed improvements. All prices subject to change without notice. Please contact your sales associate before writing an offer.

