



508 Transom Way
Sneads Ferry, NC 28460
OYSTER LANDING - BRUNSWICK

CONTACT OUR NEW HOME SPECIALISTS
MAGGIE & JENN
Call Us @ 910-405-8311
maggie@cavinessandcates.com



Priced
\$329,380

Elevation C
2,355 Sq Ft
2.0 Story
4 Beds
2.5 Baths
2 Car Garage
Master Bedroom: Up

About 508 Transom Way

- The entrance of this 2 story home showcases a 2 story ceiling with hanging decorative light fixture
- Eat-in kitchen with granite countertops, tile backsplash, white cabinets, stainless steel microwave, dishwasher, and smooth top range, satin nickel finishes, large island, walk-in pantry, and window over kitchen sink with views to the backyard
- Covered porch off of breakfast area
- Great room with gas log fireplace
- Elegant formal dining room with stunning coffered ceiling and wainscoting detail

...Read More Online

About The Community.

Situated just across the bridge from Topsail Island off of NC Hwy 172, Oyster Landing is in the perfect location; it's just a few miles from the beach and the back gate of Camp Lejeune. Furthermore, you can enjoy the day to day small town life here, and be in Wilmington or Jacksonville, North Carolina in about 30 minutes

- Beach 6 miles
- Back gate of Camp Lejeune 6 miles
- MARSOC Complex 5 miles

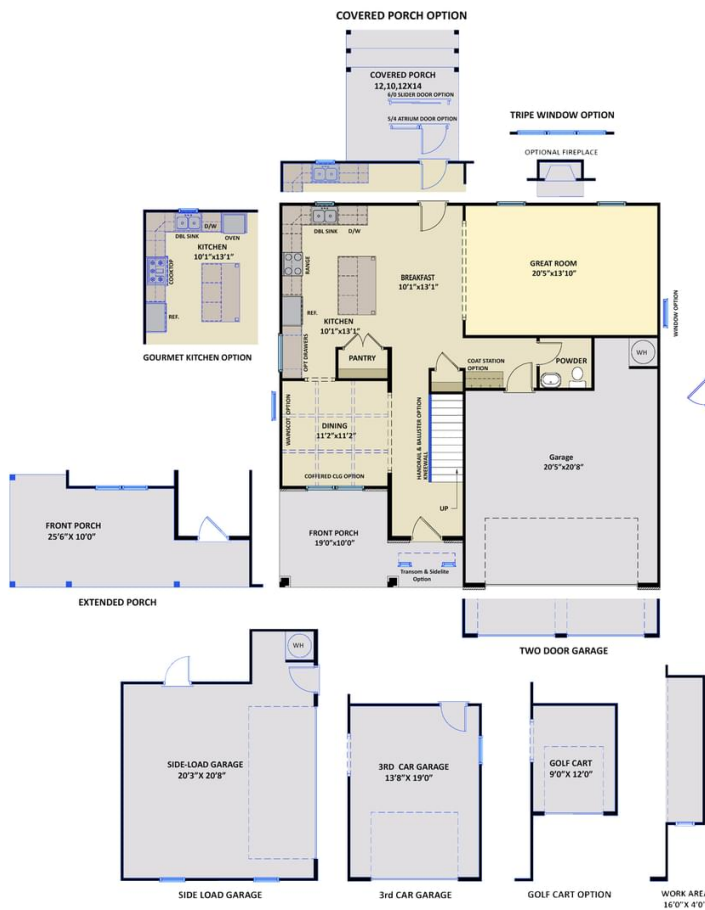
...Read More Online

Prices, plans, dimensions, features, specifications, materials, and availability of homes or communities are subject to change without notice or obligation. Illustrations are artists depictions only and may differ from completed improvements. All prices subject to change without notice. Please contact your sales associate before writing an offer.



The Brunswick
CC2355

FIRST FLOOR



SECOND FLOOR



Prices, plans, dimensions, features, specifications, materials, and availability of homes or communities are subject to change without notice or obligation. Illustrations are artists depictions only and may differ from completed improvements. All prices subject to change without notice. Please contact your sales associate before writing an offer.

