



521 Transom Way
Sneads Ferry, NC 28460
OYSTER LANDING - BAILEY

CONTACT OUR NEW HOME SPECIALISTS
MAGGIE & JENN
Call Us @ 910-405-8311
maggie@cavinessandcates.com



Priced

\$327,550

Elevation K

2,424 Sq Ft

2.0 Story

4 Beds

2.5 Baths

2 Car Garage

Master Bedroom: Up

About 521 Transom Way

- Great room with gas log fireplace
- Eat-in kitchen features granite countertops, subway tile backsplash, white cabinets, stainless steel microwave, dishwasher, and smooth top range, satin nickel finishes, pantry, and island overlooking the breakfast area
- Covered rear porch is perfect for entertaining
- Half bath with pedestal sink
- All bedrooms on the second floor convenient to the laundry room and hall bath with tub/shower

...Read More Online

About The Community.

Situated just across the bridge from Topsail Island off of NC Hwy 172, Oyster Landing is in the perfect location; it's just a few miles from the beach and the back gate of Camp Lejeune. Furthermore, you can enjoy the day to day small town life here, and be in Wilmington or Jacksonville, North Carolina in about 30 minutes

- Beach 6 miles
- Back gate of Camp Lejeune 6 miles
- MARSOC Complex 5 miles

...Read More Online

Prices, plans, dimensions, features, specifications, materials, and availability of homes or communities are subject to change without notice or obligation. Illustrations are artists depictions only and may differ from completed improvements. All prices subject to change without notice. Please contact your sales associate before writing an offer.

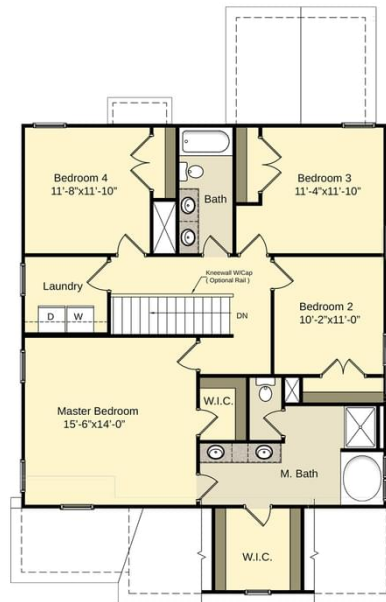


The Bailey
CC2136

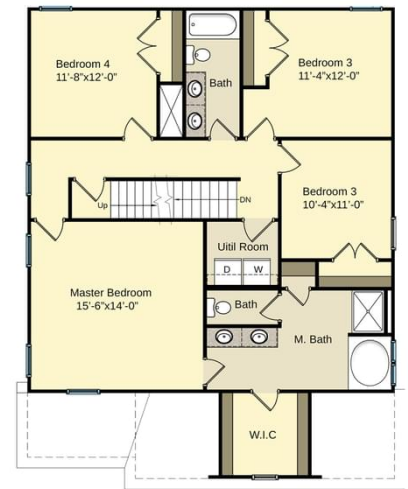
FIRST FLOOR



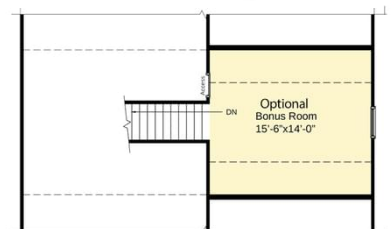
SECOND FLOOR



SECOND FLOOR WITH BONUS ROOM



THIRD FLOOR



Prices, plans, dimensions, features, specifications, materials, and availability of homes or communities are subject to change without notice or obligation. Illustrations are artists depictions only and may differ from completed improvements. All prices subject to change without notice. Please contact your sales associate before writing an offer.