



528 Transom Way  
Sneads Ferry, NC 28460  
**OYSTER LANDING - FONTANA**

CONTACT OUR NEW HOME SPECIALISTS  
**MAGGIE & JESSICA**  
Call Us @ 910-405-8311  
info@cavinessandcates.com



Elevation K  
2,308 Sq Ft  
2.0 Story  
4 Beds  
2.5 Baths  
2 Car Garage  
Master Bedroom: Down

## About 528 Transom Way

- Master suite on first floor with his and hers sinks, garden tub and separate shower, private water closet, and walk-in closet
- Open great room with gas log fireplace
- Covered porch creates the perfect outdoor living space
- Kitchen features stainless steel microwave, dishwasher, and smooth top range, satin nickel finishes, island with sink overlooking dining area, and pantry cabinet
- First-floor laundry/mud room in the garage entry

...Read More Online

## About The Community.

Situated just across the bridge from Topsail Island off of NC Hwy 172, Oyster Landing is in the perfect location; it's just a few miles from the beach and the back gate of Camp Lejeune. Furthermore, you can enjoy the day to day small-town life here, and be in Wilmington or Jacksonville, North Carolina in about 30 minutes.

- Beach 6 miles
- Back gate of Camp Lejeune 6 miles
- MARSOC Complex 5 miles

...Read More Online

Prices, plans, dimensions, features, specifications, materials, and availability of homes or communities are subject to change without notice or obligation. Illustrations are artists depictions only and may differ from completed improvements. All prices subject to change without notice. Please contact your sales associate before writing an offer.

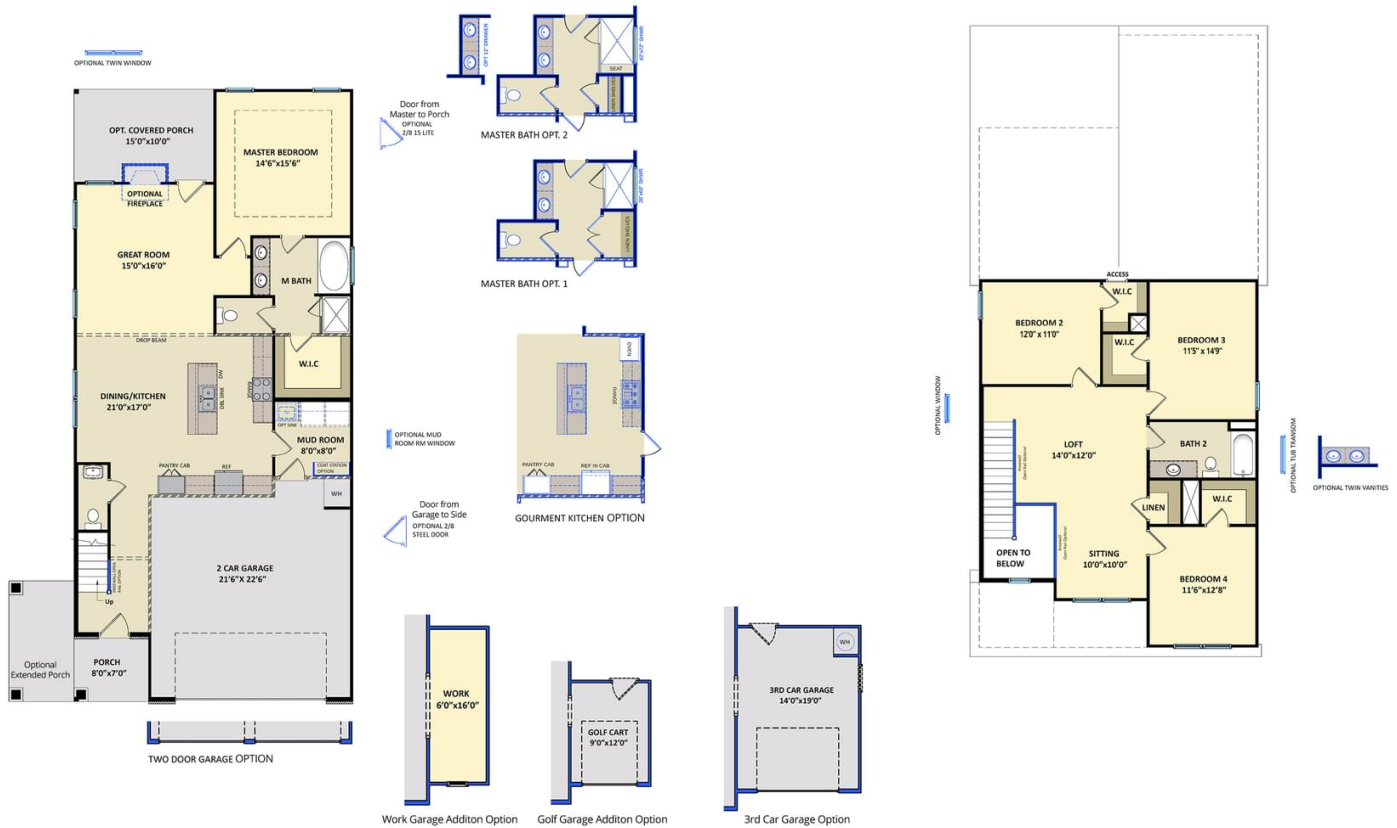


ARCHIVED 3/7/2022

**The Fontana**  
CC2308

**FIRST FLOOR**

**SECOND FLOOR**



Prices, plans, dimensions, features, specifications, materials, and availability of homes or communities are subject to change without notice or obligation. Illustrations are artists depictions only and may differ from completed improvements. All prices subject to change without notice. Please contact your sales associate before writing an offer.

