



554 Transom Way
Sneads Ferry, NC 28460
OYSTER LANDING - CLAYTON

CONTACT OUR NEW HOME SPECIALISTS

MAGGIE & JESSICA

Call Us @ 910-405-8311

info@cavinessandcates.com



Priced

\$409,680

ARCHIVED 07/07/2022 - Elevation D

2,560 Sq Ft

2.0 Story

4 Beds

3.5 Baths

2 Car Garage

Primary Bedroom: Down

About 554 Transom Way

- Primary suite on first floor with tray ceiling & crown molding, dual sinks with quartz countertops in "Niagara", "Seattle Snow" shaker cabinets, garden soaking tub and separate shower with tile surround, private water closet, and walk-in closet.
- Great room with gas log fireplace with decorative mantle and granite surround in "Absolute Black".
- Covered porch creates the perfect outdoor living space.
- Elegant formal Dining Room painted in Sherwin Williams "Riverway" with coffered ceiling and picture frame wainscoting detail.

...Read More Online

About The Community.

Situated just across the bridge from Topsail Island off of NC Hwy 172, Oyster Landing is in the perfect location; it's just a few miles from the beach and the back gate of Camp Lejeune. Furthermore, you can enjoy the day to day small-town life here, and be in Wilmington or Jacksonville, North Carolina in about 30 minutes.

- Beach 6 miles
- Back gate of Camp Lejeune 6 miles
- MARSOC Complex 5 miles

...Read More Online

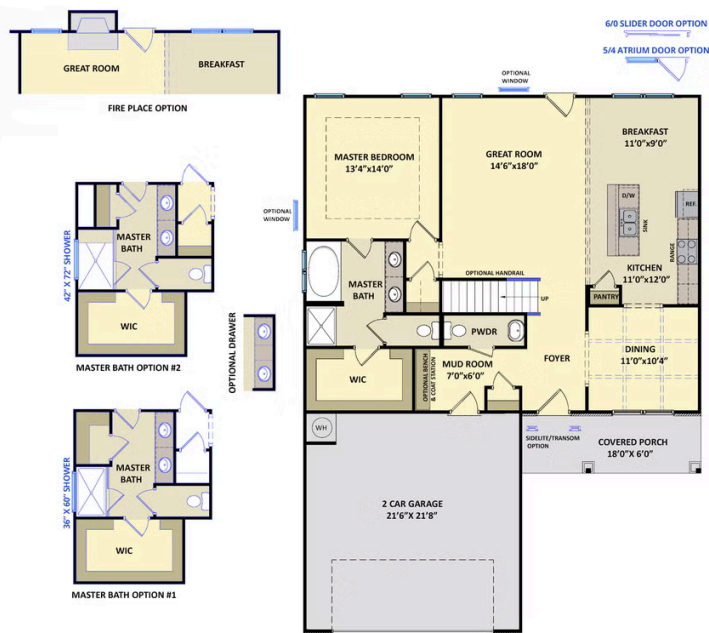
Prices, plans, dimensions, features, specifications, materials, and availability of homes or communities are subject to change without notice or obligation. Illustrations are artists depictions only and may differ from completed improvements. All prices subject to change without notice. Please contact your sales associate before writing an offer.



ARCHIVED 07/07/2022

The Clayton CC2560

FIRST FLOOR



SECOND FLOOR

