



556 Transom Way
Sneads Ferry, NC 28460
OYSTER LANDING - BRUNSWICK

CONTACT OUR NEW HOME SPECIALISTS

MAGGIE & JESSICA

Call Us @ 910-405-8311

info@cavinessandcates.com



Priced

\$389,900

ARCHIVED 7/06/2022 - Elevation F

2,355 Sq Ft

2.0 Story

4 Beds

2.5 Baths

2 Car Garage

Primary Bedroom: Up

About 556 Transom Way

- The entrance of this 2 story home showcases a 2 story ceiling with hanging decorative light fixture.
- Eat-in kitchen features granite countertops in "New Calendonia", subway tile backsplash in arctic white, "Seattle Snow" shaker cabinets with upgraded shaker drawer fronts, large island overlooking the great room, pantry, and window over kitchen sink with views to the backyard; Stainless steel microwave, dishwasher, and smooth top range.
- Covered porch creates the perfect outdoor space.
- Great room with gas log fireplace with decorative mantle and granite surround in "Absolute Black".

...Read More Online

About The Community.

Situated just across the bridge from Topsail Island off of NC Hwy 172, Oyster Landing is in the perfect location; it's just a few miles from the beach and the back gate of Camp Lejeune. Furthermore, you can enjoy the day to day small-town life here, and be in Wilmington or Jacksonville, North Carolina in about 30 minutes.

- Beach 6 miles
- Back gate of Camp Lejeune 6 miles
- MARSOC Complex 5 miles

...Read More Online

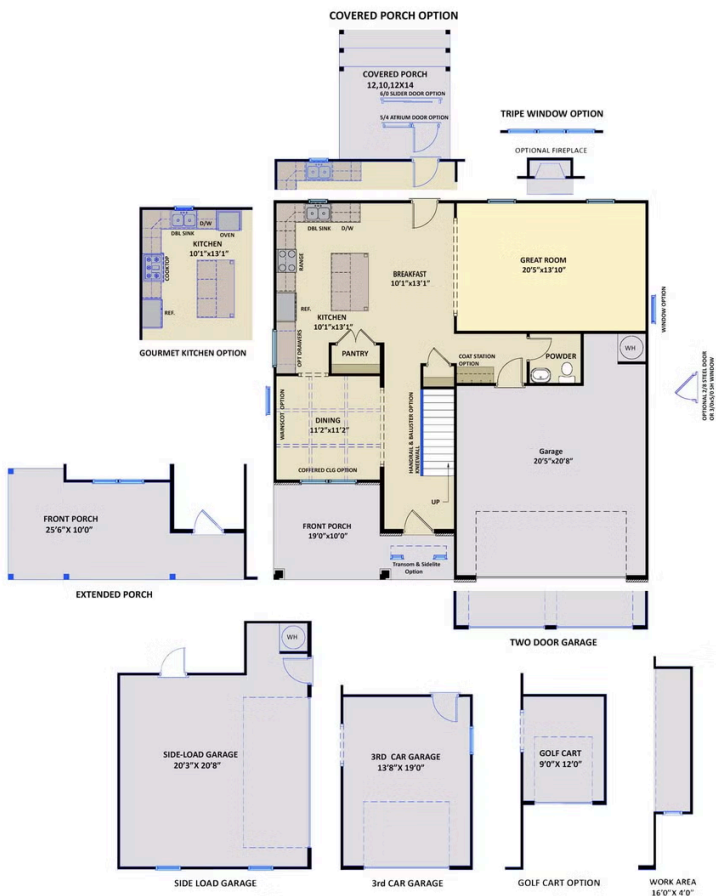
Prices, plans, dimensions, features, specifications, materials, and availability of homes or communities are subject to change without notice or obligation. Illustrations are artists depictions only and may differ from completed improvements. All prices subject to change without notice. Please contact your sales associate before writing an offer.



ARCHIVED 8/18/2023

The Brunswick CC2355

FIRST FLOOR



SECOND FLOOR

