



568 Transom Way
Sneads Ferry, NC 28460
OYSTER LANDING - BAILEY

CONTACT OUR NEW HOME SPECIALISTS
MAGGIE & JESSICA
Call Us @ 910-405-8311
info@cavinessandcates.com



Priced
\$399,900

Elevation B
2,424 Sq Ft
2.5 Story
4 Beds
2.5 Baths
2 Car Garage
Primary Bedroom: Up

About 568 Transom Way

- Great room with gas log fireplace with decorative mantle and granite surround in "Absolute Black".
- Kitchen features island, granite countertop in "Luna Pearl", subway tile backsplash in "Desert Gray" set in a brick pattern, Seattle "Snow" shaker cabinets, pantry, dining area, and extended breakfast nook; Stainless steel microwave, dishwasher, and smooth top range.
- Covered porch accessible through the dining area.
- Half-bath with pedestal sink and oval mirror.

...Read More Online

About The Community.

Situated just across the bridge from Topsail Island off of NC Hwy 172, Oyster Landing is in the perfect location; it's just a few miles from the beach and the back gate of Camp Lejeune. Furthermore, you can enjoy the day to day small-town life here, and be in Wilmington or Jacksonville, North Carolina in about 30 minutes.

- Beach 6 miles
- Back gate of Camp Lejeune 6 miles
- MARSOC Complex 5 miles

...Read More Online

Prices, plans, dimensions, features, specifications, materials, and availability of homes or communities are subject to change without notice or obligation. Illustrations are artists depictions only and may differ from completed improvements. All prices subject to change without notice. Please contact your sales associate before writing an offer.



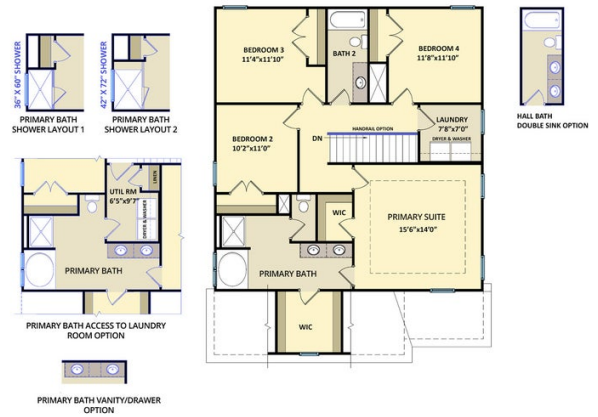
ARCHIVED 11/07/2023

The Bailey
CC2136

FIRST FLOOR



SECOND FLOOR



SECOND FLOOR WITH BONUS ROOM

