



570 Transom Way
Sneads Ferry, NC 28460
OYSTER LANDING - DRAYTON

CONTACT OUR NEW HOME SPECIALISTS
MAGGIE & JESSICA
Call Us @ 910-405-8311
info@cavinessandcates.com



Priced

\$389,900

Elevation F

2,325 Sq Ft

2.0 Story

4 Beds

2.5 Baths

2 Car Garage

Master Bedroom: Up

About 570 Transom Way

- First-floor with formal dining room painted in Sherwin Williams "Evergreen Fog" with picture frame wainscoting detail and coffered ceiling.
- Kitchen with island is open to breakfast area and great room, granite countertops in "Santa Cecilia Light", subway tile backsplash in "Arctic White" set in a brick pattern, and corner pantry; Stainless steel microwave, dishwasher, and smooth top range.
- Covered porch makes for the perfect outdoor space and is easily accessible through the breakfast area.

...Read More Online

About The Community.

Situated just across the bridge from Topsail Island off of NC Hwy 172, Oyster Landing is in the perfect location; it's just a few miles from the beach and the back gate of Camp Lejeune. Furthermore, you can enjoy the day to day small-town life here, and be in Wilmington or Jacksonville, North Carolina in about 30 minutes.

- Beach 6 miles
- Back gate of Camp Lejeune 6 miles
- MARSOC Complex 5 miles

...Read More Online

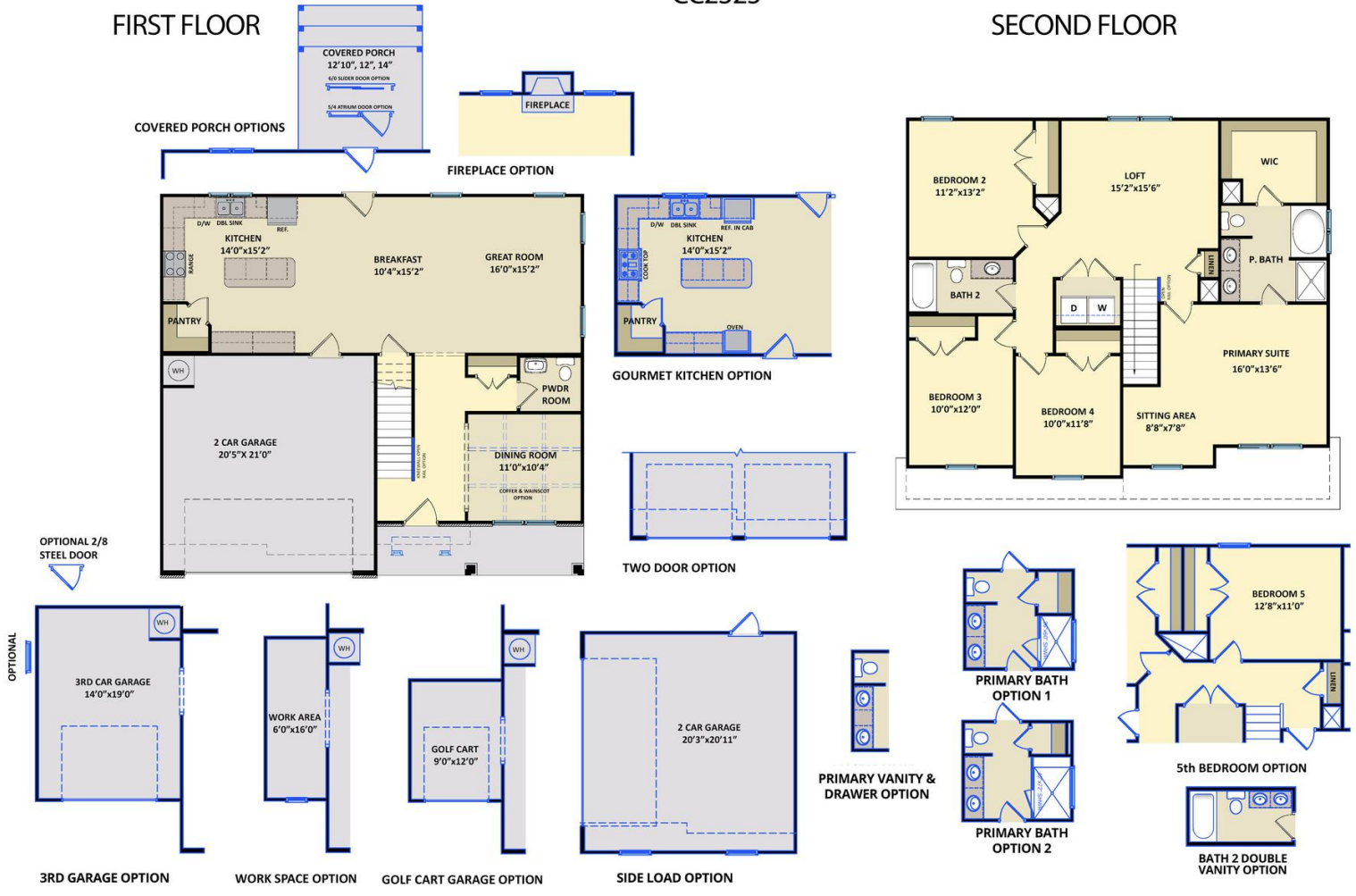
Prices, plans, dimensions, features, specifications, materials, and availability of homes or communities are subject to change without notice or obligation. Illustrations are artists depictions only and may differ from completed improvements. All prices subject to change without notice. Please contact your sales associate before writing an offer.



The Drayton
CC2325

FIRST FLOOR

SECOND FLOOR



Prices, plans, dimensions, features, specifications, materials, and availability of homes or communities are subject to change without notice or obligation. Illustrations are artists depictions only and may differ from completed improvements. All prices subject to change without notice. Please contact your sales associate before writing an offer.

