



576 Transom Way  
Sneads Ferry, NC 28460  
**OYSTER LANDING - BRUNSWICK**

CONTACT OUR NEW HOME SPECIALISTS

**MAGGIE & JESSICA**

Call Us @ 910-405-8311

info@cavinessandcates.com



**Priced**

**\$394,931**

Elevation K

2,355 Sq Ft

2.0 Story

4 Beds

2.5 Baths

2 Car Garage

Primary Bedroom: Up

## About 576 Transom Way

- The entrance of this 2 story home showcases a 2 story ceiling with hanging decorative light fixture.
- Eat-in kitchen features granite countertops in "Ashen White", subway tile backsplash in "Desert Grey" set in a brick pattern, Seattle "Snow" shaker cabinets, large island overlooking the great room, walk-in pantry, built-in desk space, and window over kitchen sink with views to the backyard; Stainless steel microwave, dishwasher, and smooth top range.
- Covered porch creates the perfect outdoor space and is easily accessible through the breakfast

...Read More Online

## About The Community.

Situated just across the bridge from Topsail Island off of NC Hwy 172, Oyster Landing is in the perfect location; it's just a few miles from the beach and the back gate of Camp Lejeune. Furthermore, you can enjoy the day to day small-town life here, and be in Wilmington or Jacksonville, North Carolina in about 30 minutes.

- Beach 6 miles
- Back gate of Camp Lejeune 6 miles
- MARSOC Complex 5 miles

...Read More Online

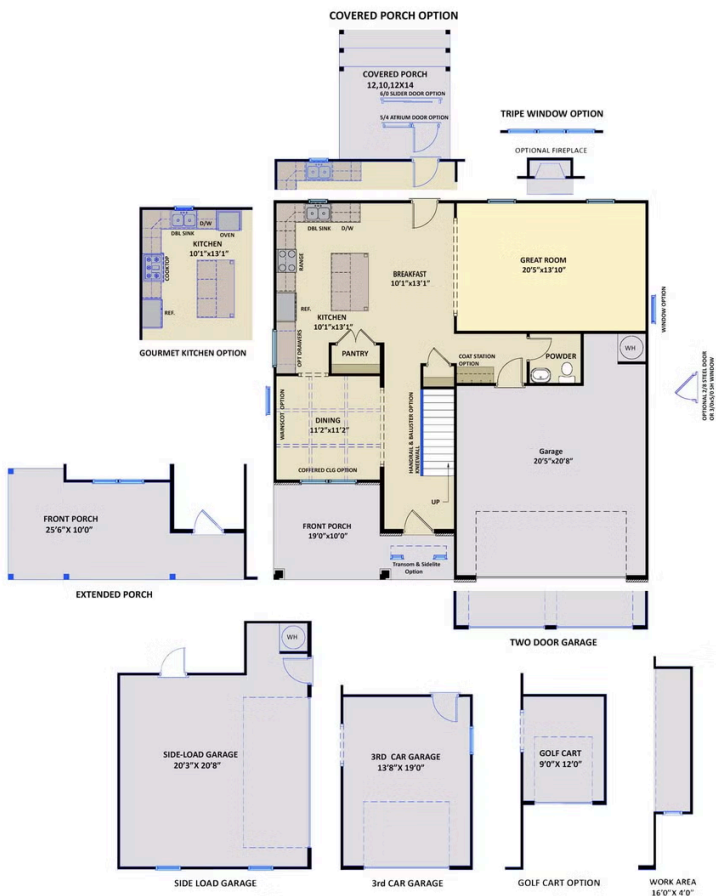
Prices, plans, dimensions, features, specifications, materials, and availability of homes or communities are subject to change without notice or obligation. Illustrations are artists depictions only and may differ from completed improvements. All prices subject to change without notice. Please contact your sales associate before writing an offer.



ARCHIVED 8/18/2023

## The Brunswick CC2355

### FIRST FLOOR



### SECOND FLOOR

