



## Priced

**\$404,943**

Elevation FH

2,432 Sq Ft

1.5 Story

4 Beds

3.0 Baths

2 Car Garage

Primary Bedroom: Down

## About 578 Transom Way

- Spacious great room with gas log fireplace with decorative mantle and granite surround in "Absolute Black".
  - Open kitchen with sink overlooking the great room, granite countertops in "Santa Cecilia Light", tile backsplash in "Arctic White" set in a brick pattern, white shaker cabinets, pantry, and dining area with views to the backyard; stainless steel microwave, dishwasher, and smooth top range.
  - Covered porch creates the perfect outdoor living space and is easily accessible through the dining
- ...Read More Online

## About The Community.

Situated just across the bridge from Topsail Island off of NC Hwy 172, Oyster Landing is in the perfect location; it's just a few miles from the beach and the back gate of Camp Lejeune. Furthermore, you can enjoy the day to day small-town life here, and be in Wilmington or Jacksonville, North Carolina in about 30 minutes.

- Beach 6 miles
- Back gate of Camp Lejeune 6 miles
- MARSOC Complex 5 miles

...Read More Online

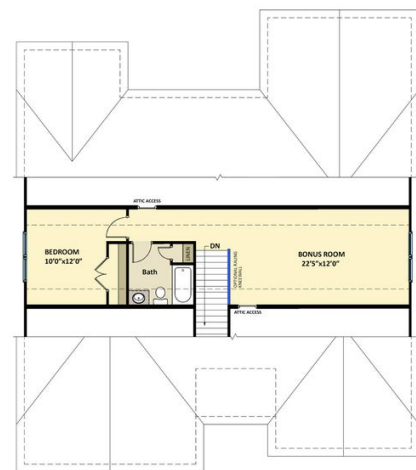
Prices, plans, dimensions, features, specifications, materials, and availability of homes or communities are subject to change without notice or obligation. Illustrations are artists depictions only and may differ from completed improvements. All prices subject to change without notice. Please contact your sales associate before writing an offer.

ARCHIVED 8/17/2023

**The Cambridge**  
CC1850

FIRST FLOOR

SECOND FLOOR



Prices, plans, dimensions, features, specifications, materials, and availability of homes or communities are subject to change without notice or obligation. Illustrations are artists depictions only and may differ from completed improvements. All prices subject to change without notice. Please contact your sales associate before writing an offer.

