



586 Transom Way
Sneads Ferry, NC 28460
OYSTER LANDING - DRAYTON

CONTACT OUR NEW HOME SPECIALISTS

MAGGIE & JESSICA

Call Us @ 910-405-8311

info@cavinessandcates.com



Elevation D

2,325 Sq Ft

2.0 Story

4 Beds

2.5 Baths

2 Car Garage

Primary Bedroom: Up

About 586 Transom Way

- First floor with formal dining room with optional wainscoting detail and coffered ceiling.
- Kitchen open to breakfast area and great room with island, corner pantry; Gourmet appliance layout option.
- Rear covered porch.
- Great room with gas log fireplace.
- Second floor primary suite includes sitting area, walk-in closet, dual sinks, optional drawer stack in vanity, and 3 tub/shower layout options

...Read More Online

About The Community.

Situated just across the bridge from Topsail Island off of NC Hwy 172, Oyster Landing is in the perfect location; it's just a few miles from the beach and the back gate of Camp Lejeune. Furthermore, you can enjoy the day to day small-town life here, and be in Wilmington or Jacksonville, North Carolina in about 30 minutes.

- Beach 6 miles
- Back gate of Camp Lejeune 6 miles
- MARSOC Complex 5 miles

...Read More Online

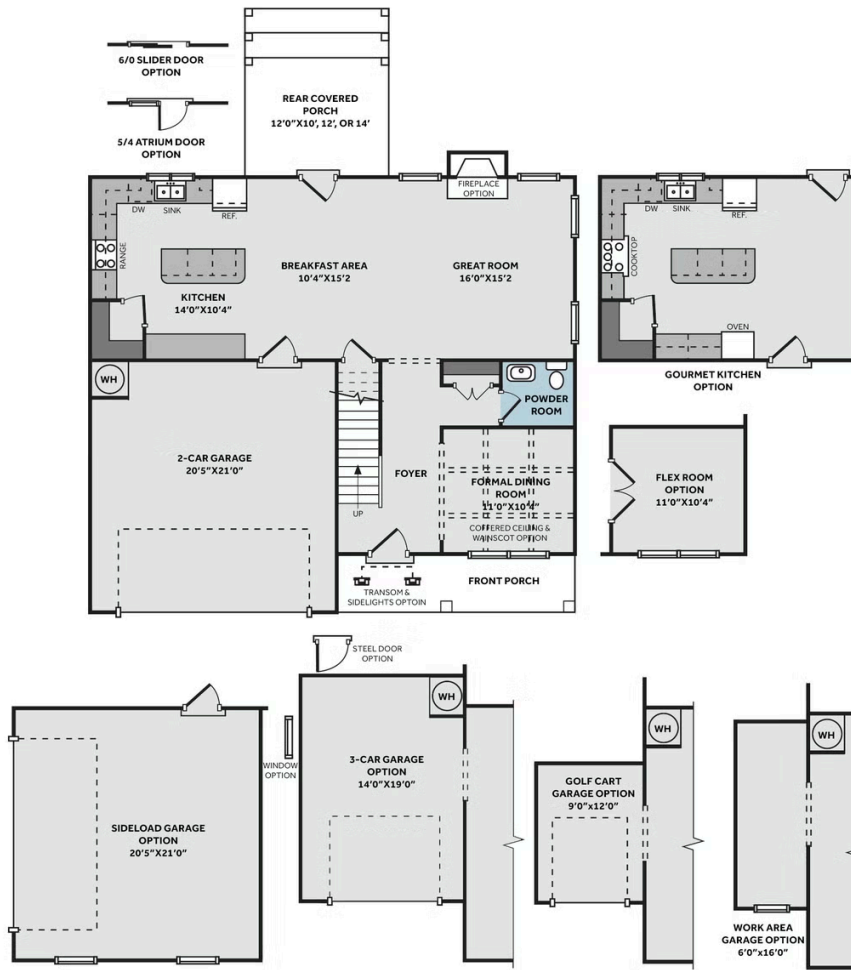
Prices, plans, dimensions, features, specifications, materials, and availability of homes or communities are subject to change without notice or obligation. Illustrations are artists depictions only and may differ from completed improvements. All prices subject to change without notice. Please contact your sales associate before writing an offer.



THE DRAYTON

CC2325

FIRST FLOOR



SECOND FLOOR

