



114 Permeta Drive
Sneads Ferry, NC 28460

PERMETA BRANCH - GRANVILLE

CONTACT OUR NEW HOME SPECIALIST

JENN HUNTOON

Call Us @ 910-405-8311

jenn@cavinessandcates.com



Priced

\$292,460

Elevation KS

2,692 Sq Ft

2.0 Story

4 Beds

2.5 Baths

2 Car Garage

Master Bedroom: Down

About 114 Permeta Drive

- Kitchen features granite countertops, gray cabinets, stainless steel microwave, dishwasher, and smooth top range, brushed nickel finishes, with breakfast area, pantry and sink overlooking great room!
- Carolina room with access to covered porch creates the perfect outdoor living space
- Half bath with pedestal sink and oval mirror
- Spacious laundry/mud room with closet and access to the garage
- Master suite with tray ceiling, walk-in closet, garden soaking tub and separate shower with tile

...Read More Online

About The Community.

Located in Sneads Ferry, a quiet, close-knit fishing village, and just 25 minutes from the bustling city of Jacksonville, Permeta Branch balances small town charm with modern luxuries. Here, families and individuals can own a home and have the Atlantic's wide, sandy beaches, scenic barrier islands, inland waterways, and lush wetlands right in their own backyard. Just 5 miles from North Topsail Beach.

...Read More Online

Prices, plans, dimensions, features, specifications, materials, and availability of homes or communities are subject to change without notice or obligation. Illustrations are artists depictions only and may differ from completed improvements. All prices subject to change without notice. Please contact your sales associate before writing an offer.

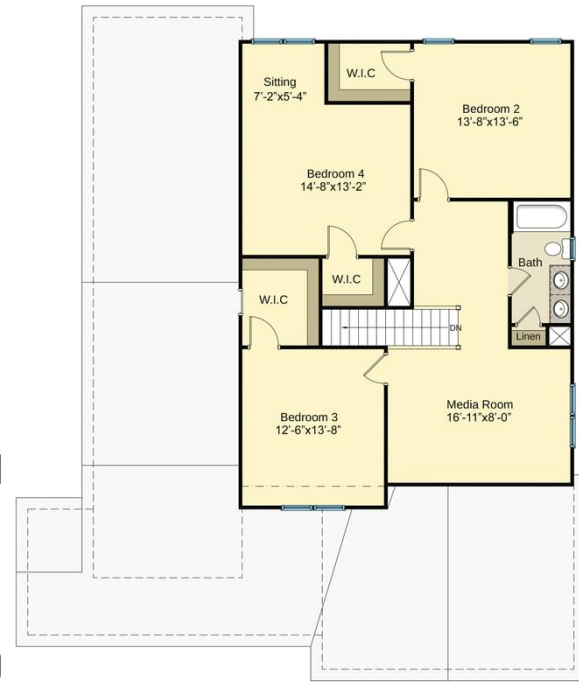


The Granville CC2680

FIRST FLOOR



SECOND FLOOR



Prices, plans, dimensions, features, specifications, materials, and availability of homes or communities are subject to change without notice or obligation. Illustrations are artists depictions only and may differ from completed improvements. All prices subject to change without notice. Please contact your sales associate before writing an offer.