



130 Permeta Drive  
Sneads Ferry, NC 28460  
**PERMETA BRANCH - GRANVILLE**

CONTACT OUR NEW HOME SPECIALISTS  
**MAGGIE & JESSICA**  
Call Us @ 910-405-8311  
info@cavinessandcates.com



Elevation C  
2,724 Sq Ft  
2.0 Story  
4 Beds  
2.5 Baths  
2 Car Garage  
Master Bedroom: Down

## About 130 Permeta Drive

- Kitchen features stainless steel microwave, dishwasher, and smooth top range, brushed nickel finishes, with breakfast area, pantry and sink overlooking great room!
- Half bath with pedestal sink and oval mirror
- Spacious laundry/mud room with closet and access to the garage
- Master suite with garden soaking tub and separate shower with tile surround, and his and hers sinks with cultured marble vanity
- Second floor with 3 additional bedrooms; all with walk-in closets!

...Read More Online

## About The Community.

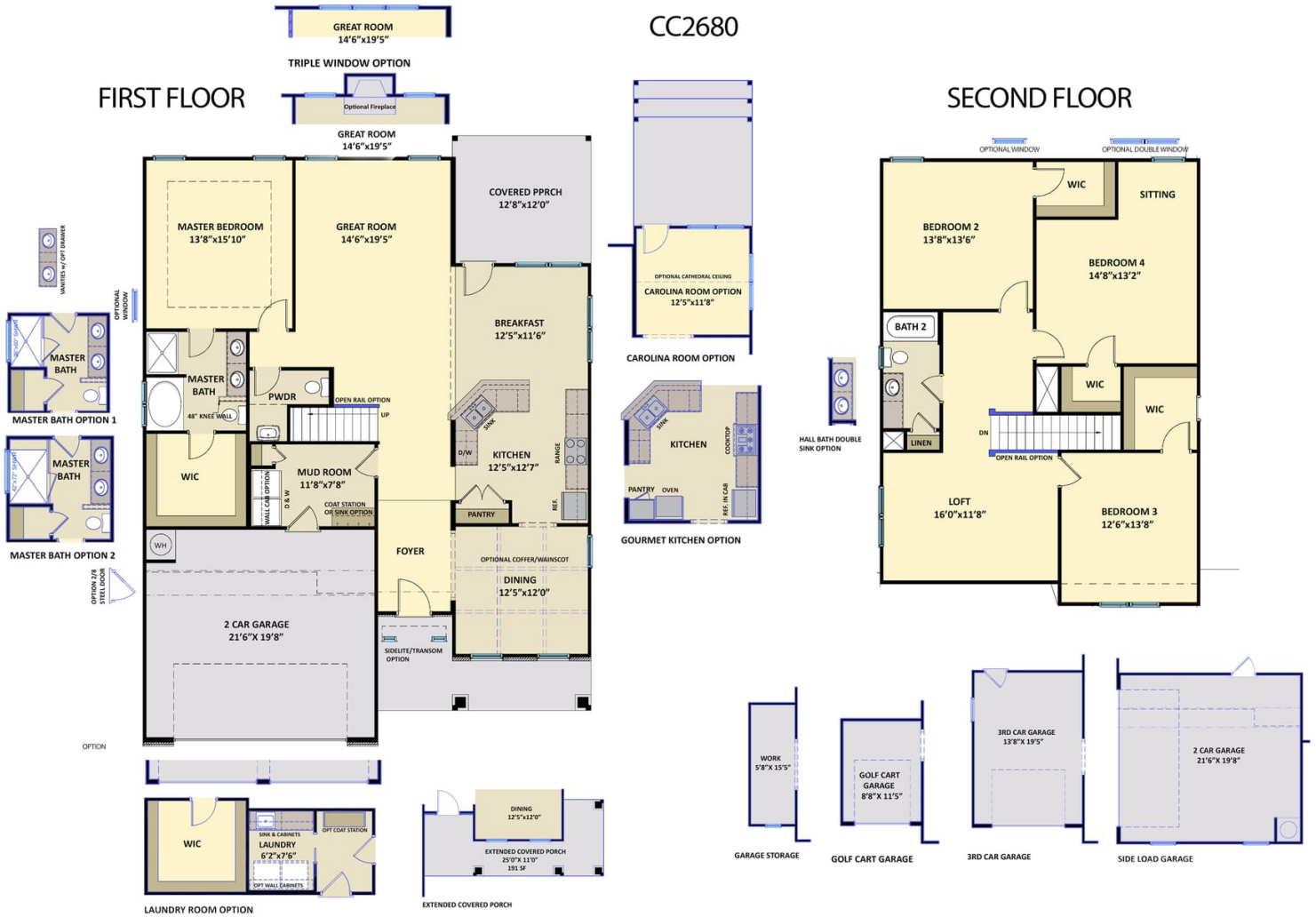
Located in Sneads Ferry, a quiet, close-knit fishing village, and just 25 minutes from the bustling city of Jacksonville, Permeta Branch balances small town charm with modern luxuries. Here, families and individuals can own a home and have the Atlantic's wide, sandy beaches, scenic barrier islands, inland waterways, and lush wetlands right in their own backyard. Just 5 miles from North Topsail Beach.

...Read More Online

Prices, plans, dimensions, features, specifications, materials, and availability of homes or communities are subject to change without notice or obligation. Illustrations are artists depictions only and may differ from completed improvements. All prices subject to change without notice. Please contact your sales associate before writing an offer.



**The Granville**  
CC2680



Prices, plans, dimensions, features, specifications, materials, and availability of homes or communities are subject to change without notice or obligation. Illustrations are artists depictions only and may differ from completed improvements. All prices subject to change without notice. Please contact your sales associate before writing an offer.

