



310 McKenzie Place  
Sneads Ferry, NC 28460

PERMETA BRANCH - OAKWINDS

CONTACT OUR NEW HOME SPECIALISTS

**MAGGIE & JESSICA**

Call Us @ 910-405-8311

info@cavinessandcates.com



**Priced**

**\$359,268**

Elevation C - ARCHIVED 3/8/2022

2,972 Sq Ft

2.0 Story

5 Beds

3.5 Baths

2 Car Garage

Primary Bedroom: Down

## About 310 McKenzie Place

- Great Room with access to covered porch, perfect for entertaining
- Kitchen features granite countertops, subway tile backsplash, white cabinets, stainless steel microwave, dishwasher, and smooth cook top range, brushed nickel finishes, with breakfast area, pantry, island overlooking great room, and window over kitchen sink with views to the backyard!
- Half bath with pedestal sink and oval mirror
- Laundry/mud room with garage access
- First floor master suite features tray ceiling & crown molding, a walk-in closet, his and hers sinks

...Read More Online

## About The Community.

### Why Join the Priority Information List?

- ✓ Be the First to Know – Get updates before the public on pricing, floorplans, and availability
- ✓ Early Access to Pre-Sales – Reserve your homesite and home plan before it's released to everyone else.

Located in Sneads Ferry, a quiet, close-knit fishing village, and just 25 minutes from the bustling city of Jacksonville. Permeta Branch balances small town charm with modern luxuries. Here, families and

...Read More Online

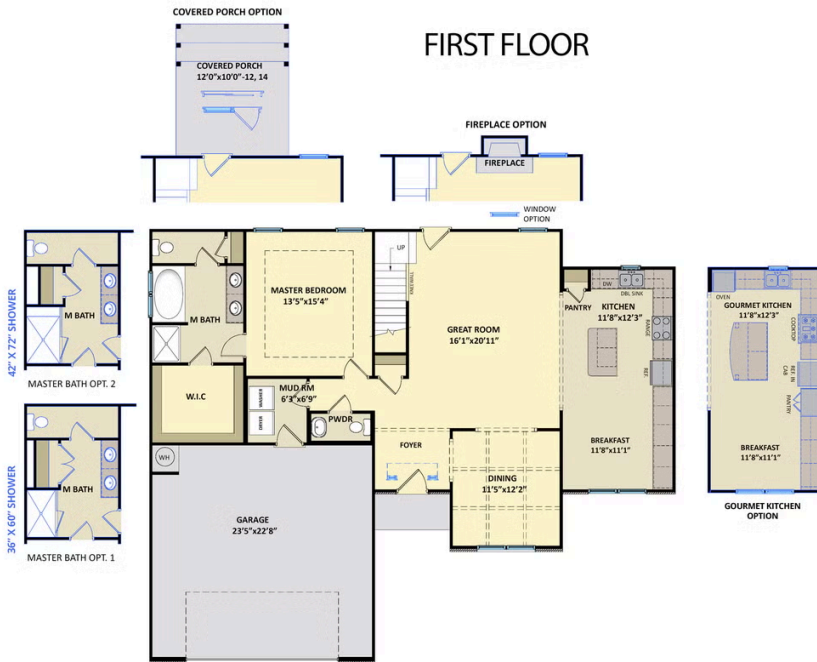
Prices, plans, dimensions, features, specifications, materials, and availability of homes or communities are subject to change without notice or obligation. Illustrations are artists depictions only and may differ from completed improvements. All prices subject to change without notice. Please contact your sales associate before writing an offer.



ARCHIVED 03/8/2022

The Oakwinds  
CC2964

FIRST FLOOR



SECOND FLOOR

