



300 Red Cedar Drive  
Sneads Ferry, NC 28460

**THE PRESERVE AT TIDEWATER - DRAYTON**

CONTACT OUR NEW HOME SPECIALISTS

**MAGGIE & JESSICA**

Call Us @ 910-405-8311

info@cavinessandcates.com



**Priced**

**\$387,205**

Elevation D

2,325 Sq Ft

2.0 Story

4 Beds

2.5 Baths

2 Car Garage

Primary Bedroom: Up

## About 300 Red Cedar Drive

- First floor with formal dining room painted in Sherwin Williams "Cityscape" with wainscoting detail and coffered ceiling.
- Kitchen open to breakfast area and great room with island, white shaker cabinets, granite countertops in "Luna Pearl", subway tile in "Desert Grey" set in a brick pattern, and corner pantry; Stainless steel microwave, dishwasher, and smooth top range.
- Covered porch and grill patio make for the perfect outdoor space!
- Great room with gas fireplace with decorative mantle and granite surround in "Absolute Black".

...Read More Online

## About The Community.

Escape. Experience. Adventure. The Preserve at Tidewater is more than a home or a neighborhood. It's an opportunity to invest in a community that honors the natural world while living in a sanctuary that preserves it for future generations.

Kick back and relax in the neighborhood swimming pool, or enjoy the spacious sundeck and prepare a delicious meal in the outdoor grilling kitchen.

Located in Sneads Ferry, a quiet, close-knit fishing village, and just 25 minutes from the bustling city of Jacksonville, the Preserve at Tidewater balances small-town charm with modern luxuries. Here, families and individuals can own a home and have the Atlantic's wide, sandy beaches, scenic barrier islands,

...Read More Online

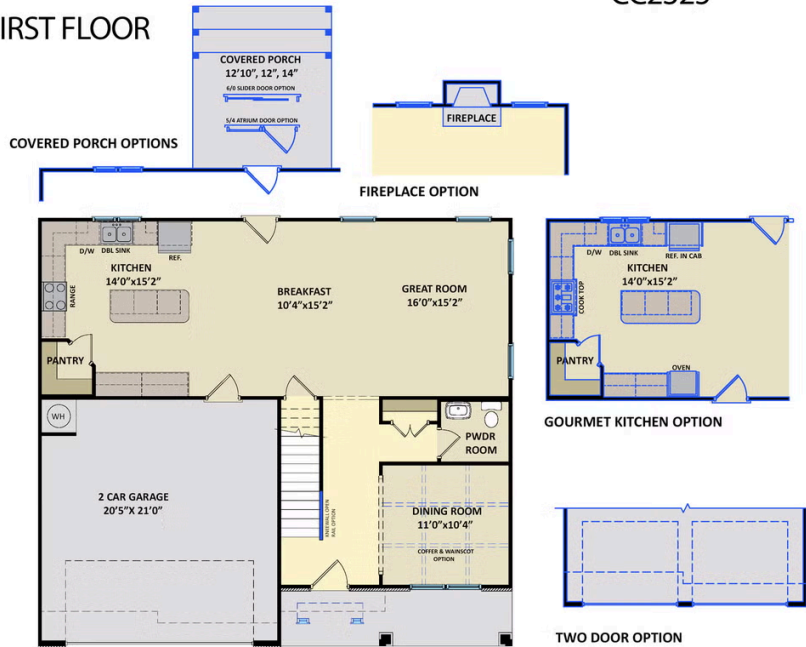
Prices, plans, dimensions, features, specifications, materials, and availability of homes or communities are subject to change without notice or obligation. Illustrations are artists depictions only and may differ from completed improvements. All prices subject to change without notice. Please contact your sales associate before writing an offer.



ARCHIVED 8/22/2023

**The Drayton**  
CC2325

**FIRST FLOOR**



**SECOND FLOOR**

