



1,654 Sq. Ft.

2 Stories

3 Bed

2.5 Bath

Primary Bed: Up

About Lookout

This open-concept townhome plan packs a punch in its 1,658 square feet!

- Upon entering the home, you are greeted with a foyer, coat closet, and powder room.
- The kitchen, open to the dining area and great room, features a spacious island with seating, plenty of countertop/cabinet space, and a pantry (*please note: the layout of the kitchen/great room/dining area spaces varies from end to middle units)
- Access to a rear covered porch and storage area from the first-floor living space.
- The primary suite, located on the second floor, includes a sitting area, plenty of natural light, a walk-

...Read More Online



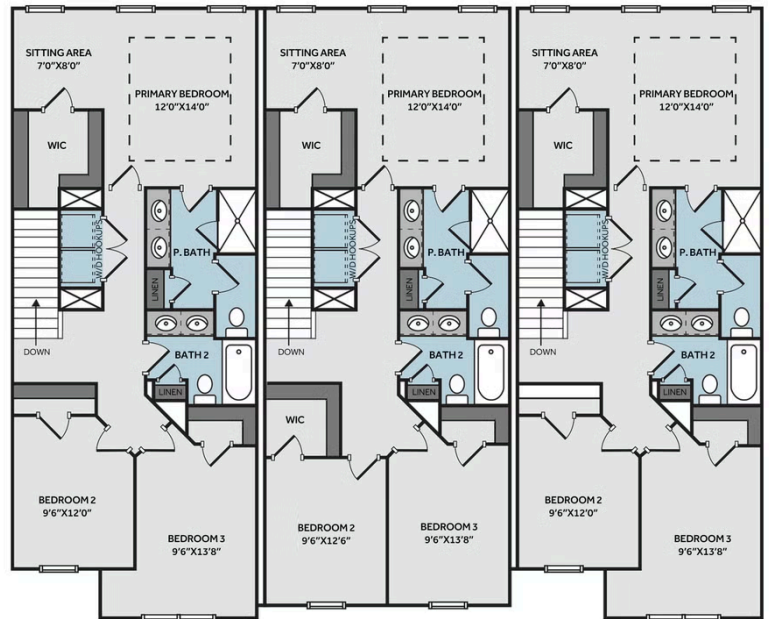
Middle Unit with B&B

THE LOOKOUT
TH1658

FIRST FLOOR



SECOND FLOOR



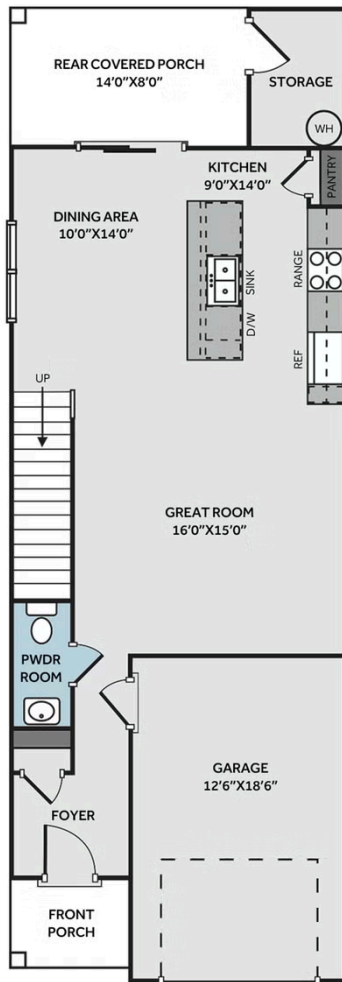
Prices, plans, dimensions, features, specifications, materials, and availability of homes or communities are subject to change without notice or obligation. Illustrations are artists depictions only and may differ from completed improvements. All prices subject to change without notice. Please contact your sales associate before writing an offer.



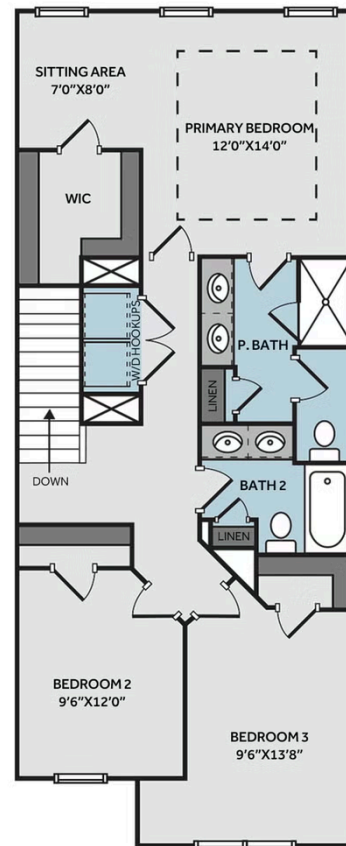
LEFT END UNIT

THE LOOKOUT
TH1658 - LEFT END UNIT

FIRST FLOOR



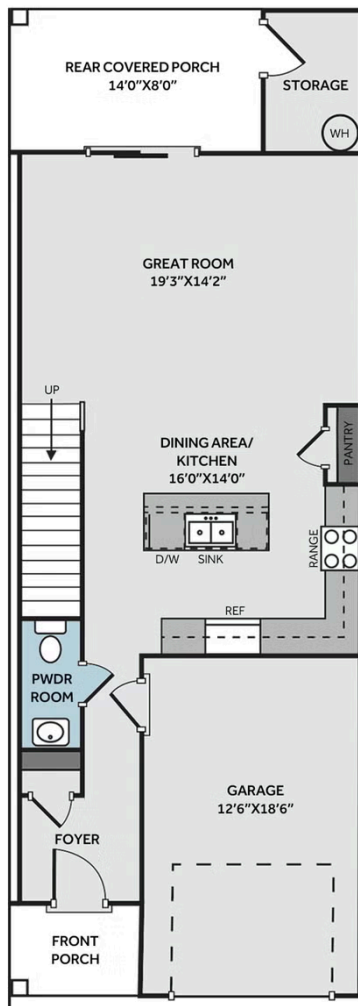
SECOND FLOOR



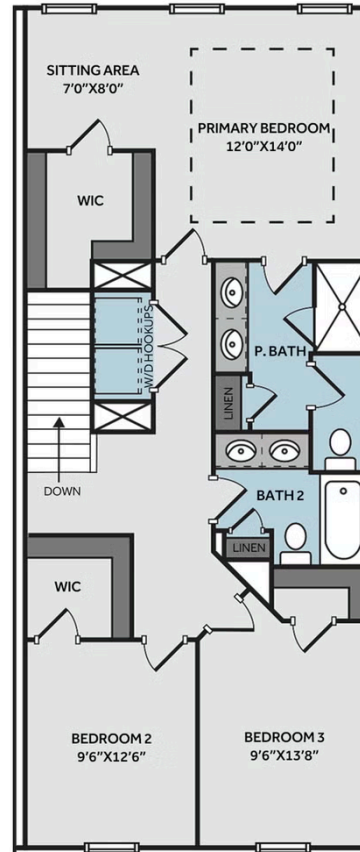
MIDDLE UNIT

THE LOOKOUT
TH1658 - MIDDLE UNIT

FIRST FLOOR



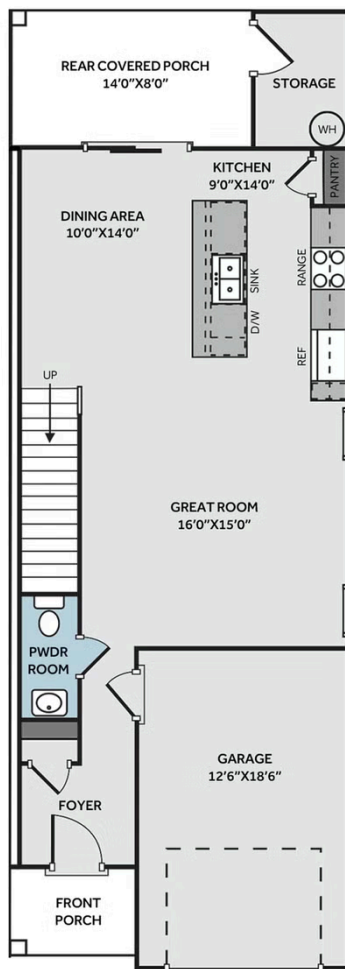
SECOND FLOOR



RIGHT END UNIT

THE LOOKOUT
TH1658 - RIGHT END UNIT

FIRST FLOOR



SECOND FLOOR

