



3,107 - 3,143 Sq. Ft.

1.5 Stories

5 Bed

3.0 Bath

2 - 3 Garage

Master Bed: Down

## About Bladen

- Formal dining room with coffered ceiling and wainscoting detail option
- Formal flex room
- Great room with corner fireplace
- Kitchen with breakfast area and island
- Optional covered porch with patio
- Master Suite on the first floor with, beautiful tray ceiling, walk-in closet, his and hers sinks, garden tub and walk-in shower

...Read More Online



Elevation B



Elevation BP

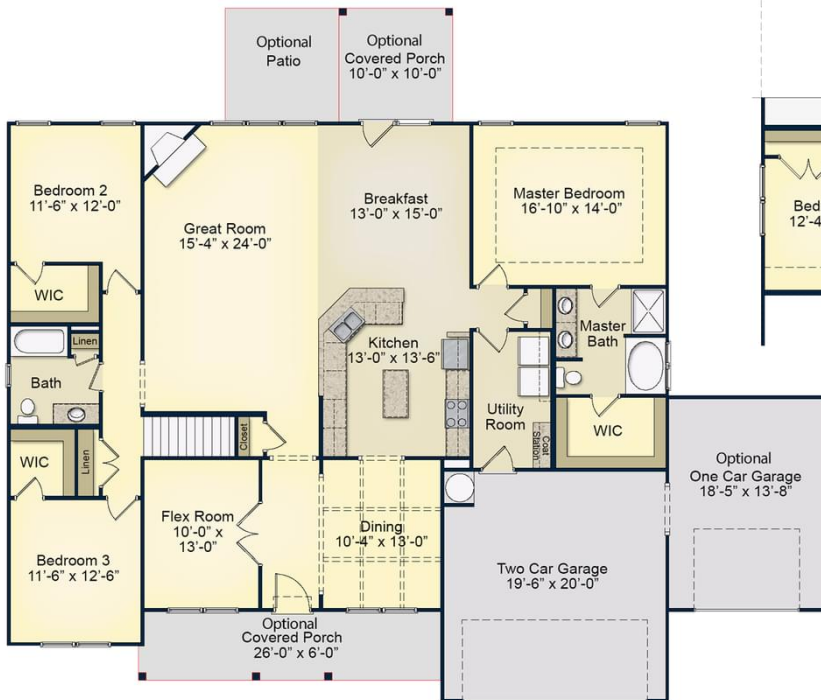


Elevation C

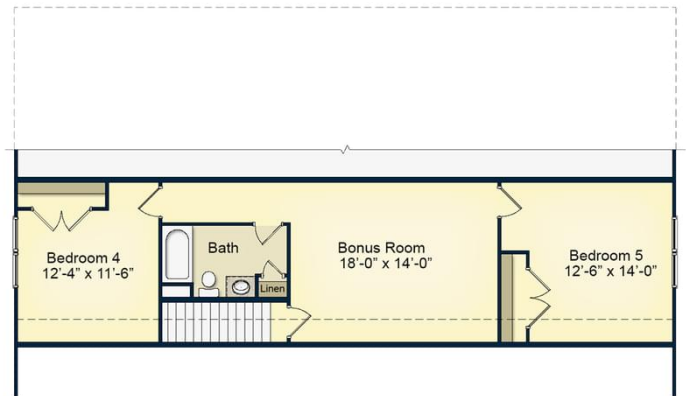
**The Bladen**

CC3107

FIRST FLOOR



SECOND FLOOR



Prices, plans, dimensions, features, specifications, materials, and availability of homes or communities are subject to change without notice or obligation. Illustrations are artists depictions only and may differ from completed improvements. All prices subject to change without notice. Please contact your sales associate before writing an offer.