



3,575 Sq. Ft.

2 Stories

5 - 6 Bed

4.5 Bath

2 - 3 Garage

Master Bed: Up

About Savannah

- This home features master suites on both the first and second floor! Master suites showcase optional tray ceilings, his and hers closets and sinks, garden tub, separate shower, linen closet, private water closet, 2nd floor master suite with private access to sitting room.
- Great room on first floor with fireplace
- Kitchen with breakfast area, pantry, butler pantry and access to optional covered porch
- Formal dining room with optional coffered ceiling and wainscoting detail
- Utility rooms on first and second floor

...Read More Online



Elevation B



Elevation C



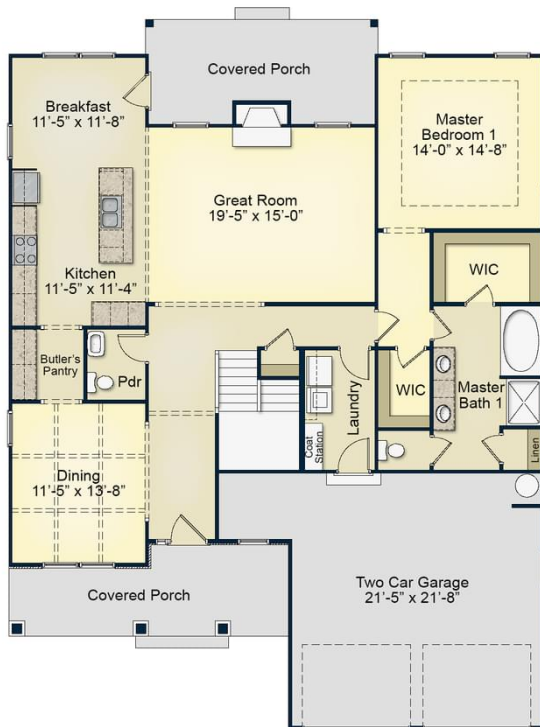
Elevation KS

Prices, plans, dimensions, features, specifications, materials, and availability of homes or communities are subject to change without notice or obligation. Illustrations are artists depictions only and may differ from completed improvements. All prices subject to change without notice. Please contact your sales associate before writing an offer.

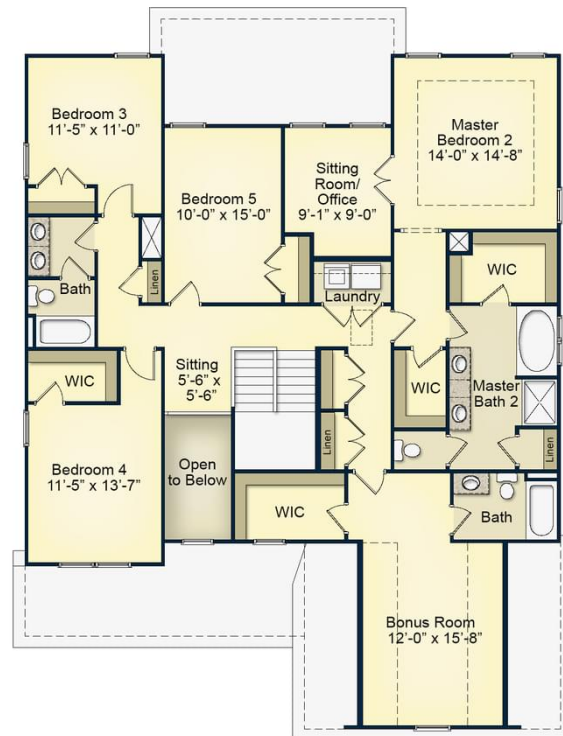
The Savannah

CC3575

FIRST FLOOR



SECOND FLOOR



Prices, plans, dimensions, features, specifications, materials, and availability of homes or communities are subject to change without notice or obligation. Illustrations are artists depictions only and may differ from completed improvements. All prices subject to change without notice. Please contact your sales associate before writing an offer.

Prices, plans, dimensions, features, specifications, materials, and availability of homes or communities are subject to change without notice or obligation. Illustrations are artists depictions only and may differ from completed improvements. All prices subject to change without notice. Please contact your sales associate before writing an offer.