



107 Cardovia Way
Wendell, NC 27591

MAGGIE WAY - BLADEN

CONTACT OUR NEW HOME SPECIALISTS

MAGGIE & JESSICA

Call Us @ 910-405-8311

info@cavinessandcates.com



Priced

\$554,953

Elevation F

3,142 Sq Ft

1.5 Story

4 Beds

3.0 Baths

2 Car Garage

Primary Bedroom: Down

About 107 Cardovia Way

- A welcoming foyer opens to a formal dining room with two-piece crown molding and wainscoting, across from a versatile flex room.
- The great room features a cozy corner gas log fireplace and flows seamlessly into the open-concept kitchen and breakfast area.
- The kitchen offers white shaker cabinets with an accent island painted in "Jade", "Trigato" quartz countertops, white subway tile backsplash, and stainless steel appliances.
- The breakfast area flows directly to the rear covered porch.

...Read More Online

About The Community.

Classic and understated style, coupled with an ideal location and approachable affordability lead you home to Maggie Way! Cool off by the pool or cast a line into the five-acre lake. Your community offers a spacious "Tot Lot" where kids of all ages will have room to roam and scale the brand-new playground. Located in the peaceful rural community of Archer Lodge, Maggie Way might feel like a serene country escape, but it's only a few short minutes from the big city opportunities of Raleigh. For those who want the best of both worlds, who want big city life without being overwhelmed by it, who still love the scent of clean air and the sight of unsullied blue skies, and who want to work, play, and live their best lives in their

Furnished Open House
Saturday, 11am-4pm

...Read More Online

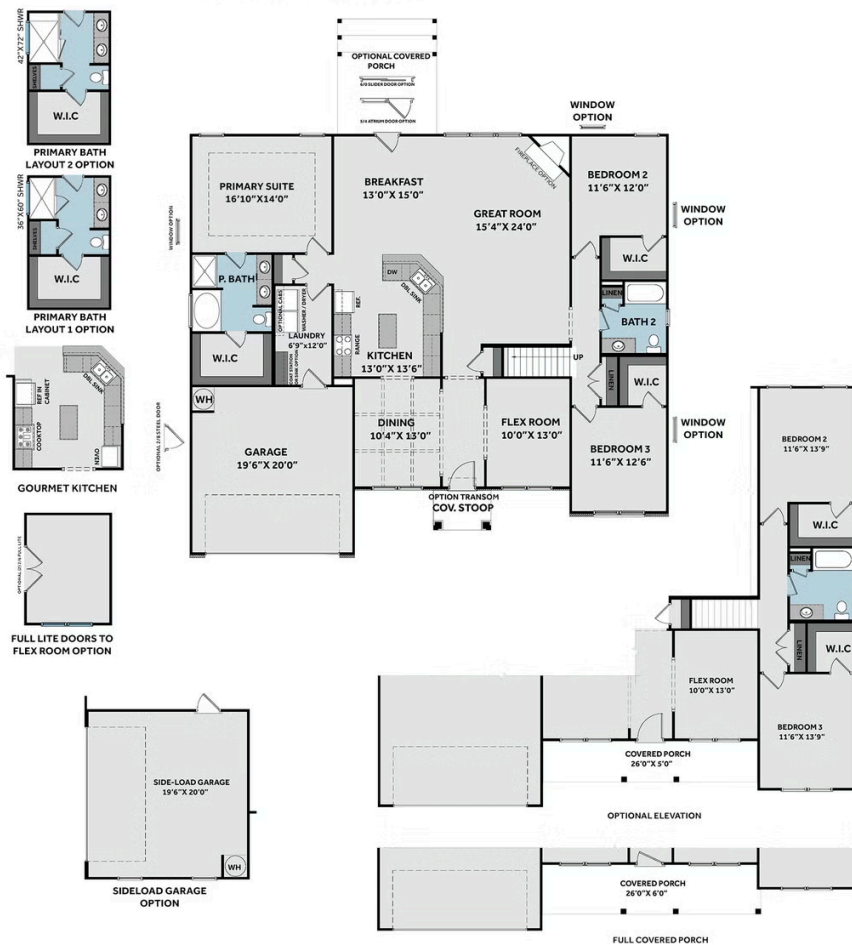
Prices, plans, dimensions, features, specifications, materials, and availability of homes or communities are subject to change without notice or obligation. Illustrations are artists depictions only and may differ from completed improvements. All prices subject to change without notice. Please contact your sales associate before writing an offer.



THE BLADEN

CC3107

FIRST FLOOR



SECOND FLOOR

