



115 Painters Mill Pond Ln  
Wendell, NC 27591

**MAGGIE WAY - DRAYTON**

CONTACT OUR NEW HOME SPECIALISTS

**MAGGIE & JESSICA**

Call Us @ 910-405-8311

info@cavinessandcates.com



**Priced**

**\$442,000**

Elevation F

2,325 Sq Ft

2.0 Story

4 Beds

2.5 Baths

2 Car Garage

Primary Bedroom: Up

## About 115 Painters Mill Pond Ln

- Great room with gas log fireplace with decorative mantle and granite surround in "Absolute Black".
- Kitchen features island open to breakfast area and great room, granite countertops in "Luna Pearl", subway tile backsplash in "Desert Gray" set in brick pattern, white shaker cabinets, corner pantry, and window over kitchen sink with views to the backyard; Stainless steel microwave, dishwasher, and smooth top range.
- Covered porch creates the perfect outdoor space and is easily accessible through the breakfast

...Read More Online

## About The Community.

Classic and understated style, coupled with an ideal location and approachable affordability lead you home to Maggie Way! Cool off by the future pool or cast a line into the five acre lake. Your community will also offer a spacious "Tot Lot" where kids of all ages will have room to roam and scale the brand-new playground.

Located in the peaceful rural community of Archer Lodge, Maggie Way might feel like a serene country escape, but it's actually only a few short minutes from the big city opportunities of Raleigh. For those who want the best of both worlds, who want big city life without being overwhelmed by it, who still love the scent of clean air and the sight of unsullied blue skies, and who want to work, play and live their best

...Read More Online

Prices, plans, dimensions, features, specifications, materials, and availability of homes or communities are subject to change without notice or obligation. Illustrations are artists depictions only and may differ from completed improvements. All prices subject to change without notice. Please contact your sales associate before writing an offer.

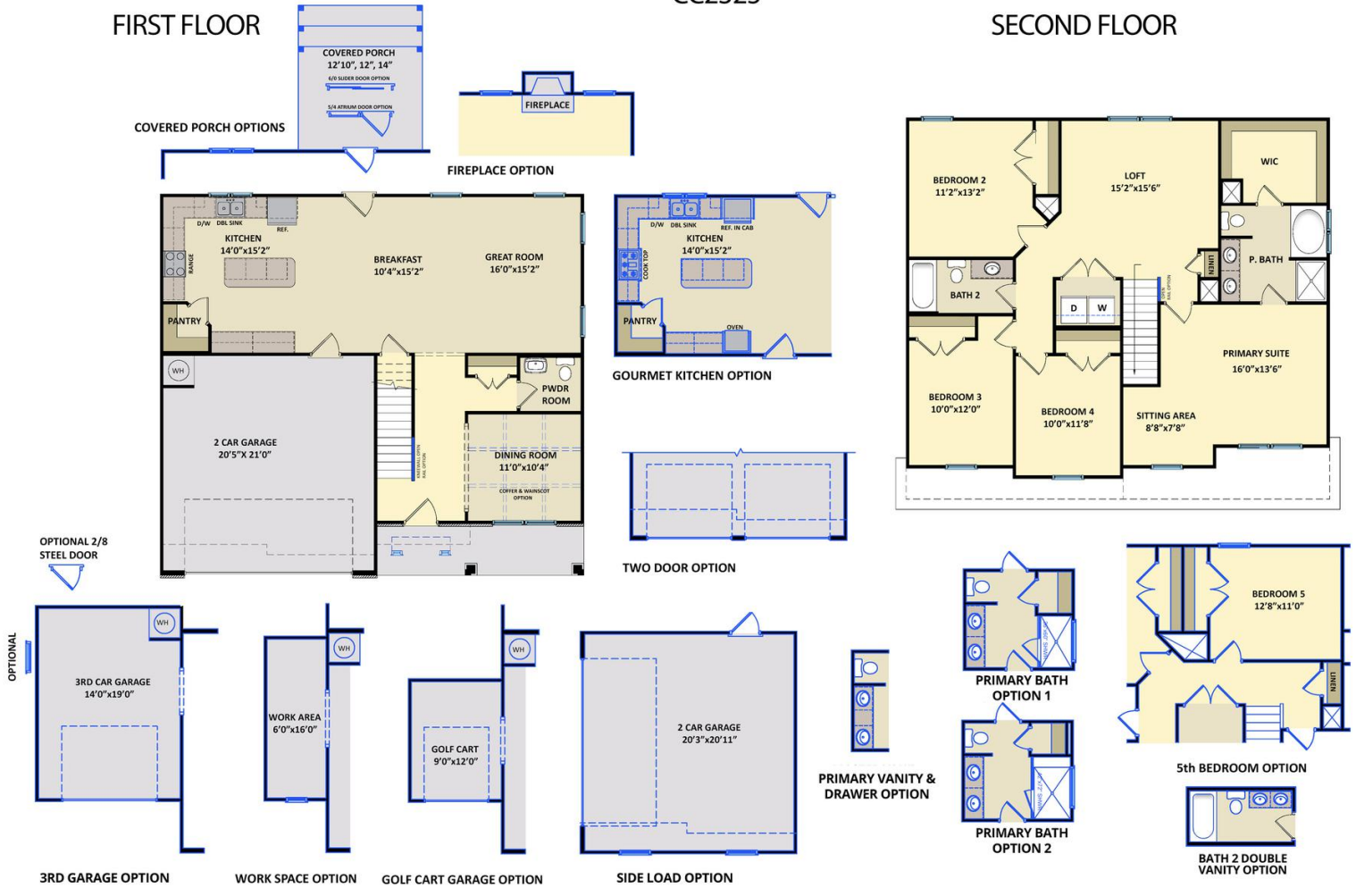


ARCHIVED 8/22/2023

**The Drayton**  
CC2325

**FIRST FLOOR**

**SECOND FLOOR**



Prices, plans, dimensions, features, specifications, materials, and availability of homes or communities are subject to change without notice or obligation. Illustrations are artists depictions only and may differ from completed improvements. All prices subject to change without notice. Please contact your sales associate before writing an offer.

