



157 W. Clydes Point Way
Wendell, NC 27591

MAGGIE WAY - DRAYTON

CONTACT OUR NEW HOME SPECIALISTS

MAGGIE & JESSICA

Call Us @ 910-405-8311

info@cavinessandcates.com



Priced

\$361,573

Elevation E - Archived 2/10/2022

2,325 Sq Ft

2.0 Story

4 Beds

2.5 Baths

2 Car Garage

Primary Bedroom: Up

About 157 W. Clydes Point Way

- Elegant formal dining room with stunning coffered ceiling and wainscoting detail
- Kitchen features granite countertops, subway tile backsplash, white cabinets, stainless steel microwave, dishwasher, and smooth cooktop range, satin nickel finishes, island, corner pantry, and window over sink with views of the backyard.
- Covered porch creates the perfect outdoor entertaining space
- Great room with gas fireplace
- Half bath with pedestal sink and framed mirror

[...Read More Online](#)

About The Community.

Classic and understated style, coupled with an ideal location and approachable affordability lead you home to Maggie Way! Cool off by the pool or cast a line into the five-acre lake. Your community offers a spacious "Tot Lot" where kids of all ages will have room to roam and scale the brand-new playground. Located in the peaceful rural community of Archer Lodge, Maggie Way might feel like a serene country escape, but it's only a few short minutes from the big city opportunities of Raleigh. For those who want the best of both worlds, who want big city life without being overwhelmed by it, who still love the scent of clean air and the sight of unsullied blue skies, and who want to work, play, and live their best lives in their



[...Read More Online](#)

Prices, plans, dimensions, features, specifications, materials, and availability of homes or communities are subject to change without notice or obligation. Illustrations are artists depictions only and may differ from completed improvements. All prices subject to change without notice. Please contact your sales associate before writing an offer.

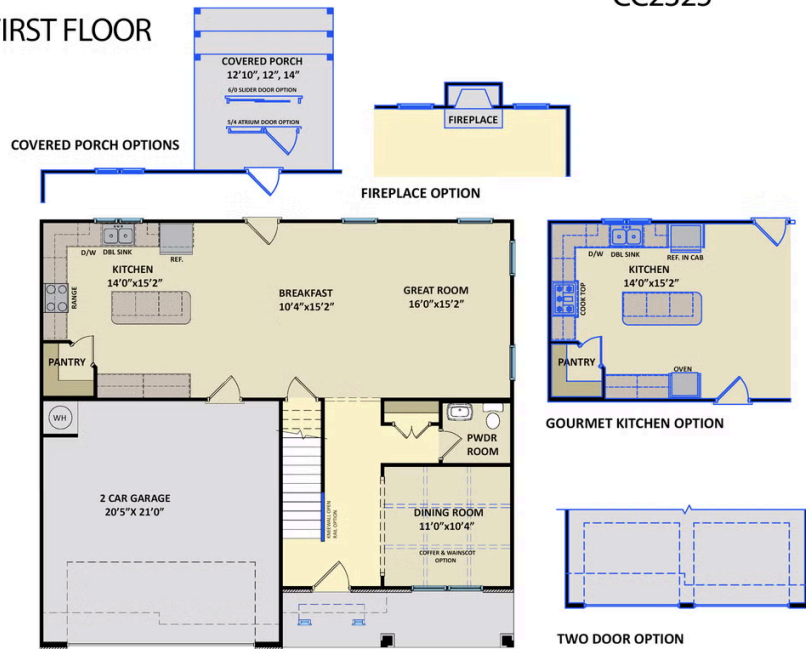


ARCHIVED 2021

The Drayton

CC2325

FIRST FLOOR



SECOND FLOOR

