



188 E Clydes Point Way
Wendell, NC 27591

MAGGIE WAY - PAMLICO

CONTACT OUR NEW HOME SPECIALISTS

MAGGIE & JESSICA

Call Us @ 910-405-8311

info@cavinessandcates.com



Priced

\$465,000

2,522 Sq Ft

2.0 Story

5 Beds

3.0 Baths

2 Car Garage

Primary Bedroom: Up

About 188 E Clydes Point Way

- First floor with formal dining room painted in Sherwin Williams "Rare Grey" coffered ceiling and picture frame wainscoting detail.
- Open kitchen with island overlooking the great room, granite countertops in "New Caledonia", subway tile backsplash in "Desert Gray", white shaker cabinets, corner pantry, and breakfast area; Stainless steel microwave, dishwasher, and smooth top range.
- Great room with corner gas fireplace with decorative mantle and granite surround in "Absolute Black" and rear porch access through sliding glass door.

...Read More Online

About The Community.

Classic and understated style, coupled with an ideal location and approachable affordability lead you home to Maggie Way! Cool off by the future pool or cast a line into the five-acre lake. Your community will also offer a spacious "Tot Lot" where kids of all ages will have room to roam and scale the brand-new playground.

Located in the peaceful rural community of Archer Lodge, Maggie Way might feel like a serene country escape, but it's actually only a few short minutes from the big city opportunities of Raleigh. For those who want the best of both worlds, who want big city life without being overwhelmed by it, who still love the scent of clean air and the sight of unsullied blue skies, and who want to work, play, and live their best

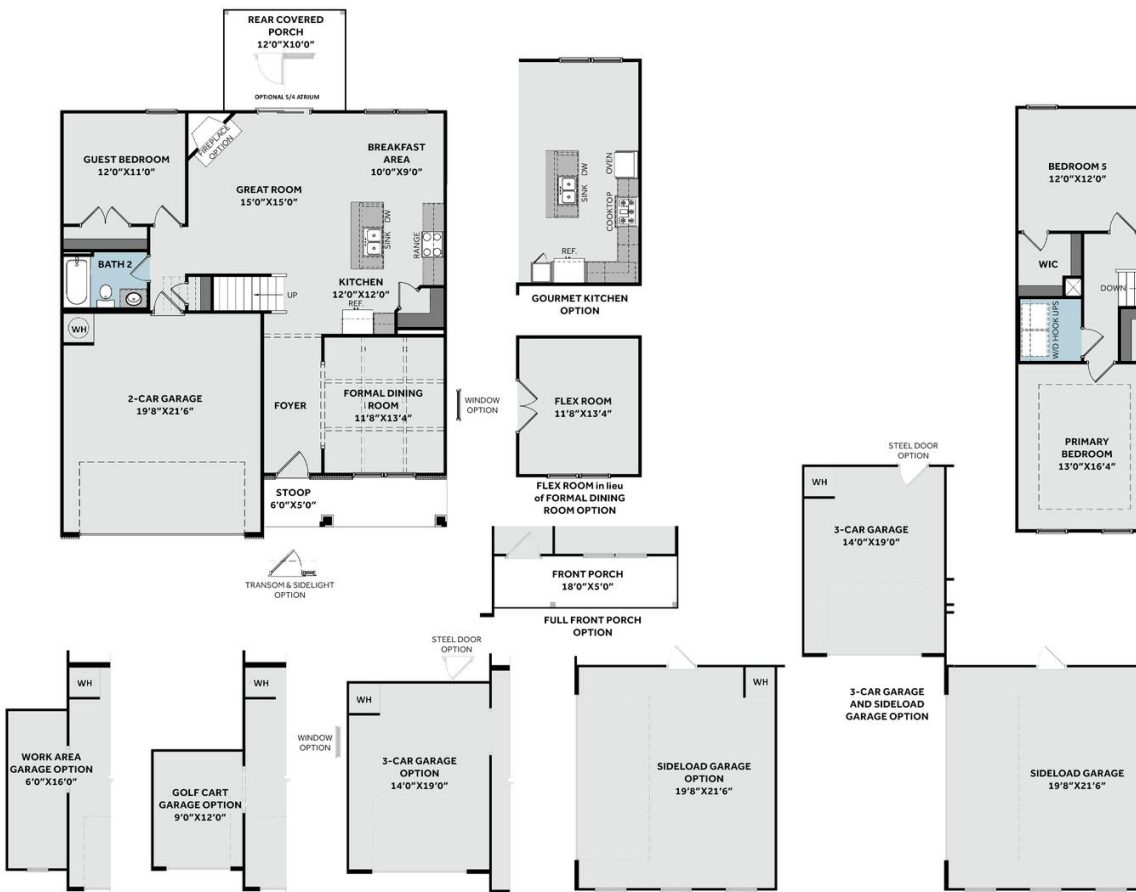
...Read More Online

Prices, plans, dimensions, features, specifications, materials, and availability of homes or communities are subject to change without notice or obligation. Illustrations are artists depictions only and may differ from completed improvements. All prices subject to change without notice. Please contact your sales associate before writing an offer.



THE PAMLICO CC2522

FIRST FLOOR



SECOND FLOOR

