



20 W. Clydes Point Way  
Wendell, NC 27591

**MAGGIE WAY - BAILEY**

CONTACT OUR NEW HOME SPECIALISTS

**MAGGIE & JESSICA**

Call Us @ 910-405-8311

info@cavinessandcates.com



**Priced**

**\$396,083**

Elevation K

2,424 Sq Ft

2.0 Story

3 Beds

2.5 Baths

2 Car Garage

Master Bedroom: Up

## About 20 W. Clydes Point Way

- Great room features gas log fireplace with decorative mantel and a "Steel Grey" surround.
- Open kitchen with island and extended breakfast area with views to the backyard, white shaker cabinets, granite countertops in "Azul Platino", subway tile in "Desert Grey" set in herringbone pattern; Stainless steel microwave, dishwasher, and smooth top range.
- Covered back deck is accessible through the dining area.
- Crown molding in the foyer, great room, and kitchen/dining area.
- Powder room with a framed mirror.

...Read More Online

## About The Community.

Classic and understated style, coupled with an ideal location and approachable affordability lead you home to Maggie Way! Cool off by the pool, socialize at the poolhouse or cast a line into the five acre lake. Your community will also offer a spacious "Tot Lot" where kids of all ages will have room to roam and scale the brand-new playground.

Located in the peaceful rural community of Archer Lodge, Maggie Way might feel like a serene country escape, but it's actually only a few short minutes from the big city opportunities of Raleigh. For those who want the best of both worlds, who want big city life without being overwhelmed by it, who still love the scent of clean air and the sight of unsullied blue skies, and who want to work, play and live their best

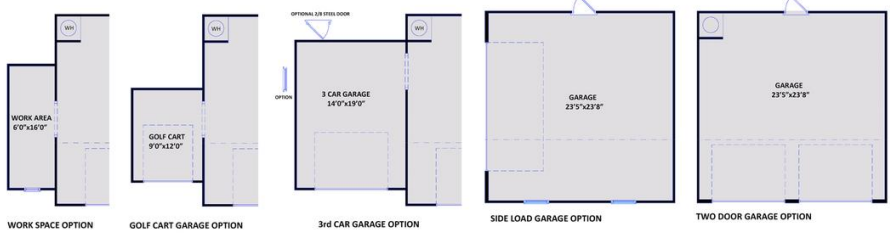
...Read More Online

Prices, plans, dimensions, features, specifications, materials, and availability of homes or communities are subject to change without notice or obligation. Illustrations are artists depictions only and may differ from completed improvements. All prices subject to change without notice. Please contact your sales associate before writing an offer.



**The Bailey**  
CC2136

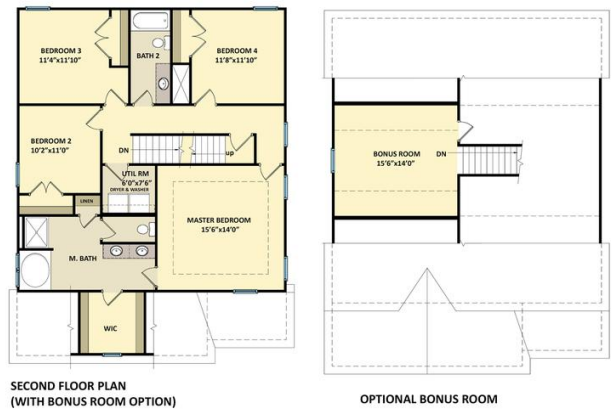
**FIRST FLOOR**



**SECOND FLOOR**



**SECOND FLOOR WITH BONUS ROOM**



Prices, plans, dimensions, features, specifications, materials, and availability of homes or communities are subject to change without notice or obligation. Illustrations are artists depictions only and may differ from completed improvements. All prices subject to change without notice. Please contact your sales associate before writing an offer.

