



251 E Clydes Point Way  
Wendell, NC 27591

**MAGGIE WAY - DRAYTON**

CONTACT OUR NEW HOME SPECIALISTS

**MAGGIE & JESSICA**

Call Us @ 910-405-8311

info@cavinessandcates.com



**Priced**

**\$454,900**

2,325 Sq Ft

2.0 Story

3 Beds

2.5 Baths

2 Car Garage

Primary Bedroom: Up

## About 251 E Clydes Point Way

- Foyer with french door access to flex room.
- Kitchen with island is open to breakfast area and great room, quartz countertops in "New Willow White", subway tile backsplash in "Desert Gray" set in a herringbone pattern, white shaker cabinets with island cabinets painted in "Outerspace", and corner pantry; Stainless steel microwave, dishwasher, and smooth top range.
- Covered porch with grill patio makes for the perfect outdoor space and is easily accessible through the breakfast area!

[...Read More Online](#)

## About The Community.

Classic and understated style, coupled with an ideal location and approachable affordability lead you home to Maggie Way! Cool off by the pool or cast a line into the five-acre lake. Your community offers a spacious "Tot Lot" where kids of all ages will have room to roam and scale the brand-new playground. Located in the peaceful rural community of Archer Lodge, Maggie Way might feel like a serene country escape, but it's only a few short minutes from the big city opportunities of Raleigh. For those who want the best of both worlds, who want big city life without being overwhelmed by it, who still love the scent of clean air and the sight of unsullied blue skies, and who want to work, play, and live their best lives in their



[...Read More Online](#)

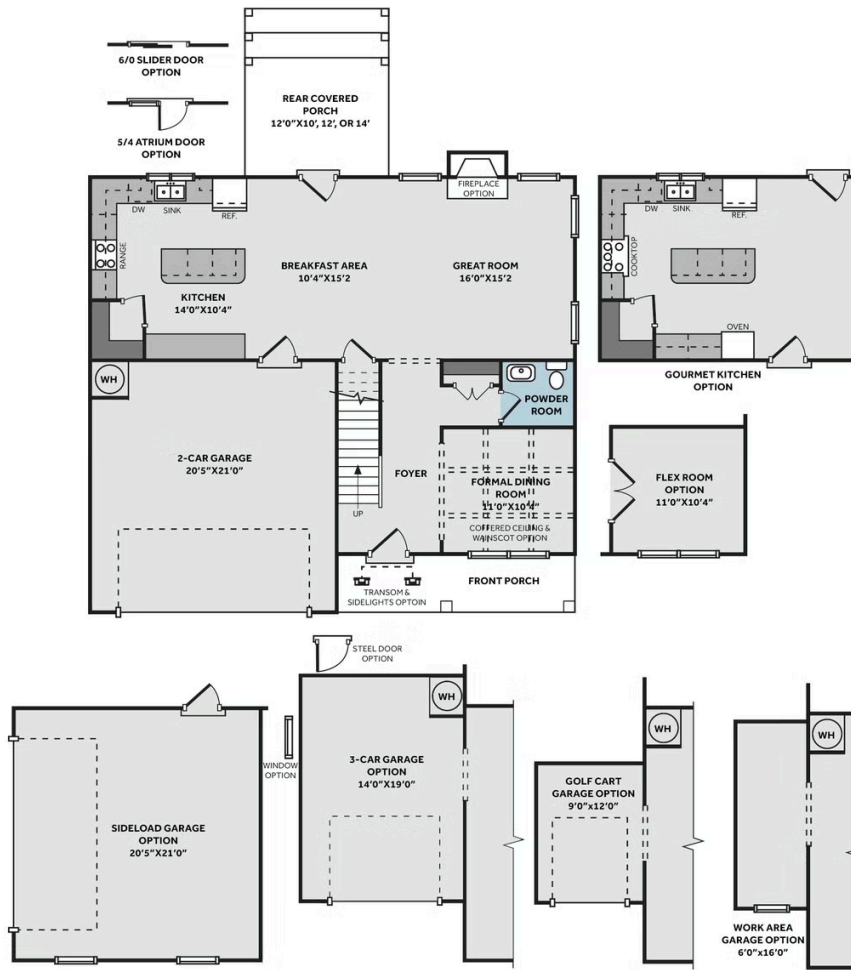
Prices, plans, dimensions, features, specifications, materials, and availability of homes or communities are subject to change without notice or obligation. Illustrations are artists depictions only and may differ from completed improvements. All prices subject to change without notice. Please contact your sales associate before writing an offer.



## THE DRAYTON

CC2325

### FIRST FLOOR



### SECOND FLOOR

