



27 Painters Mill Pond Lane  
Wendell, NC 27591

**MAGGIE WAY - DOGWOOD**

CONTACT OUR NEW HOME SPECIALISTS

**MAGGIE & JESSICA**

Call Us @ 910-405-8311

info@cavinessandcates.com



**Priced**

**\$423,900**

Elevation FH

1,863 Sq Ft

1.0 Story

3 Beds

2.0 Baths

2 Car Garage

Primary Bedroom: Down

## About 27 Painters Mill Pond Lane

- Open kitchen with dining area with views to the backyard, island with sink overlooking the great room, granite countertops in "Luna Pearl", white shaker cabinets, and subway tile backsplash in "Desert Gray" set in a herringbone pattern; Stainless steel microwave, dishwasher, and smooth top range.
  - Great room with gas log fireplace with decorative mantle and granite surround in "Absolute Black" and sliding door access to rear covered deck.
  - Crown molding throughout foyer, great room, and kitchen/dining area
- ...Read More Online

## About The Community.

Classic and understated style, coupled with an ideal location and approachable affordability lead you home to Maggie Way! Cool off by the future pool or cast a line into the five acre lake. Your community will also offer a spacious "Tot Lot" where kids of all ages will have room to roam and scale the brand-new playground.

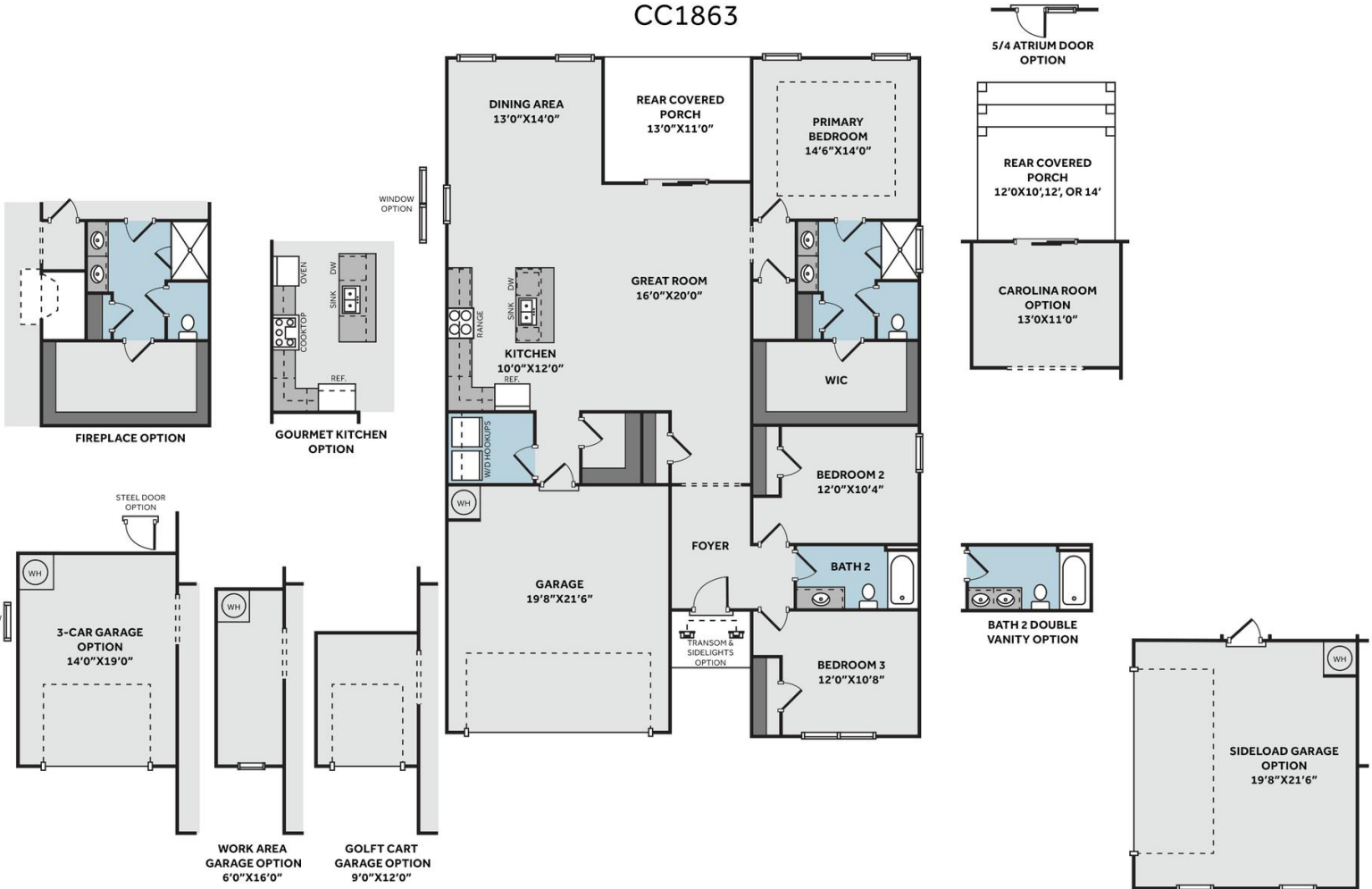
Located in the peaceful rural community of Archer Lodge, Maggie Way might feel like a serene country escape, but it's actually only a few short minutes from the big city opportunities of Raleigh. For those who want the best of both worlds, who want big city life without being overwhelmed by it, who still love the scent of clean air and the sight of unsullied blue skies, and who want to work, play and live their best

...Read More Online

Prices, plans, dimensions, features, specifications, materials, and availability of homes or communities are subject to change without notice or obligation. Illustrations are artists depictions only and may differ from completed improvements. All prices subject to change without notice. Please contact your sales associate before writing an offer.



**THE DOGWOOD**  
CC1863



Prices, plans, dimensions, features, specifications, materials, and availability of homes or communities are subject to change without notice or obligation. Illustrations are artists depictions only and may differ from completed improvements. All prices subject to change without notice. Please contact your sales associate before writing an offer.

