



311 Martins Mill Court
Wendell, NC 27591

MAGGIE WAY - BRUNSWICK

CONTACT OUR NEW HOME SPECIALISTS

MAGGIE & JESSICA

Call Us @ 910-405-8311

info@cavinessandcates.com



Priced

\$448,000

Elevation K

2,355 Sq Ft

2.0 Story

3 Beds

2.5 Baths

2 Car Garage

Master Bedroom: Up

About 311 Martins Mill Court

- The entrance of this 2 story home showcases a 2 story ceiling with hanging decorative light fixture
- Eat-in kitchen features granite countertops in "Luna Pearl", subway tile backsplash in "Desert Gray" set in a brick pattern, Seattle "Snow" shaker cabinets, large island overlooking the great room, pantry, built-in desk space, and window over kitchen sink with views to the backyard; Stainless steel microwave, dishwasher, and smooth top range.
- Covered porch creates a perfect outdoor space and is easily accessible through the breakfast area.

...Read More Online

About The Community.

Classic and understated style, coupled with an ideal location and approachable affordability lead you home to Maggie Way! Cool off by the pool, socialize at the poolhouse or cast a line into the five acre lake. Your community will also offer a spacious "Tot Lot" where kids of all ages will have room to roam and scale the brand-new playground.

Located in the peaceful rural community of Archer Lodge, Maggie Way might feel like a serene country escape, but it's actually only a few short minutes from the big city opportunities of Raleigh. For those who want the best of both worlds, who want big city life without being overwhelmed by it, who still love the scent of clean air and the sight of unsullied blue skies, and who want to work, play and live their best

...Read More Online

Prices, plans, dimensions, features, specifications, materials, and availability of homes or communities are subject to change without notice or obligation. Illustrations are artists depictions only and may differ from completed improvements. All prices subject to change without notice. Please contact your sales associate before writing an offer.

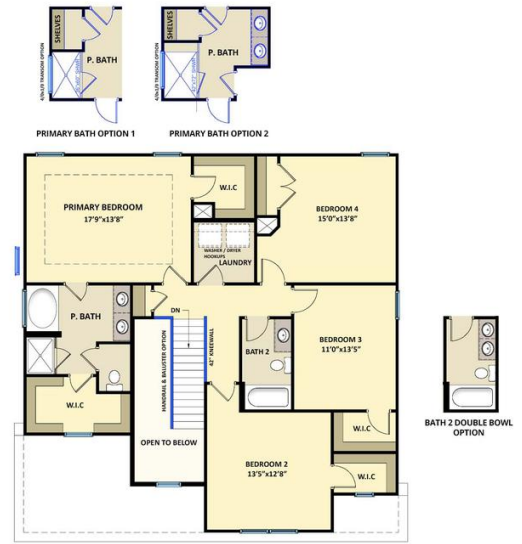


The Brunswick
CC2355

FIRST FLOOR



SECOND FLOOR



Prices, plans, dimensions, features, specifications, materials, and availability of homes or communities are subject to change without notice or obligation. Illustrations are artists depictions only and may differ from completed improvements. All prices subject to change without notice. Please contact your sales associate before writing an offer.

