



507 E. Clydes Point Way
Wendell, NC 27591

MAGGIE WAY - GRANVILLE

CONTACT OUR NEW HOME SPECIALISTS

MAGGIE & JESSICA

Call Us @ 910-405-8311

info@cavinessandcates.com



Priced

\$529,899

Elevation K - Artistic Rendering for
Representation Purposes Only

2,724 Sq Ft

2.0 Story

4 Beds

2.5 Baths

2 Car Garage

Primary Bedroom: Down

About 507 E. Clydes Point Way

- This home features a spacious great room with a gas log fireplace accented by a “Grey Chestnut” stained floating mantle.
- Off the foyer, a formal dining room painted in SW “Rare Gray” features two-piece crown molding, wainscoting, and a walkthrough to the kitchen.
- The kitchen features “Trigato” quartz countertops, white shaker cabinets, tile backsplash, pantry, and stainless steel appliances—microwave, dishwasher, and smooth top range.

[...Read More Online](#)

About The Community.

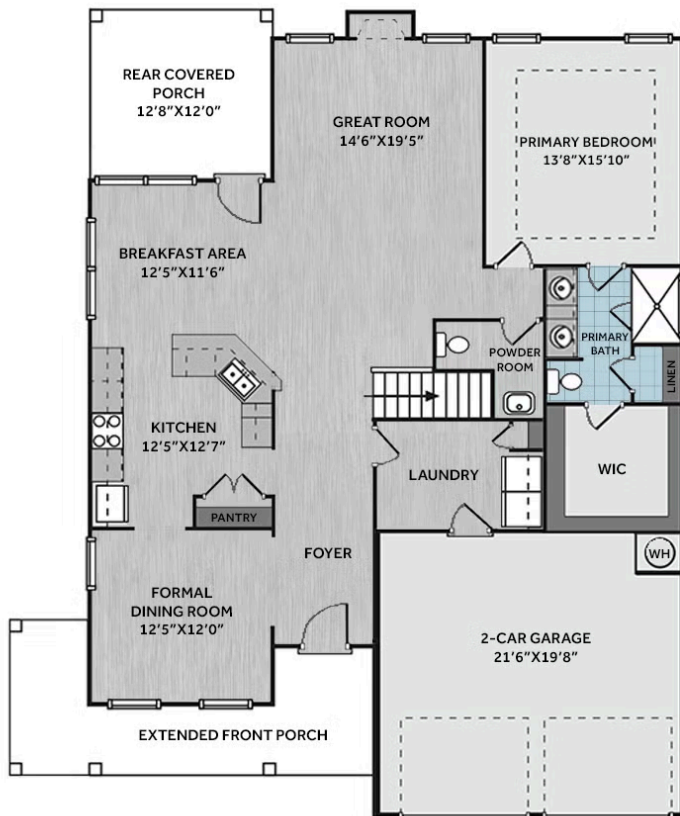
Classic and understated style, coupled with an ideal location and approachable affordability lead you home to Maggie Way! Cool off by the pool or cast a line into the five-acre lake. Your community offers a spacious “Tot Lot” where kids of all ages will have room to roam and scale the brand-new playground. Located in the peaceful rural community of Archer Lodge, Maggie Way might feel like a serene country escape, but it's only a few short minutes from the big city opportunities of Raleigh. For those who want the best of both worlds, who want big city life without being overwhelmed by it, who still love the scent of clean air and the sight of unsullied blue skies, and who want to work, play, and live their best lives in their own backyard, this is the place to be!

[...Read More Online](#)

Prices, plans, dimensions, features, specifications, materials, and availability of homes or communities are subject to change without notice or obligation. Illustrations are artists depictions only and may differ from completed improvements. All prices subject to change without notice. Please contact your sales associate before writing an offer.



FIRST FLOOR



SECOND FLOOR

