



3,107 Sq. Ft.

1.5 Stories

5 Bed

3.0 Bath

Master Bed: Down

About Bladen

- Formal dining room with coffered ceiling and wainscoting detail option
- Formal flex room with optional french door entry and added window option
- Great room with optional corner fireplace
- Kitchen open to great room with breakfast area and island; gourmet appliance layout option
- Optional covered porch with patio with 3 door options
- Master Suite on the first floor with third window option for added natural lighting, optional tray ceiling, walk-in closet, his and hers sinks and 3 tub/shower layout options

...Read More Online



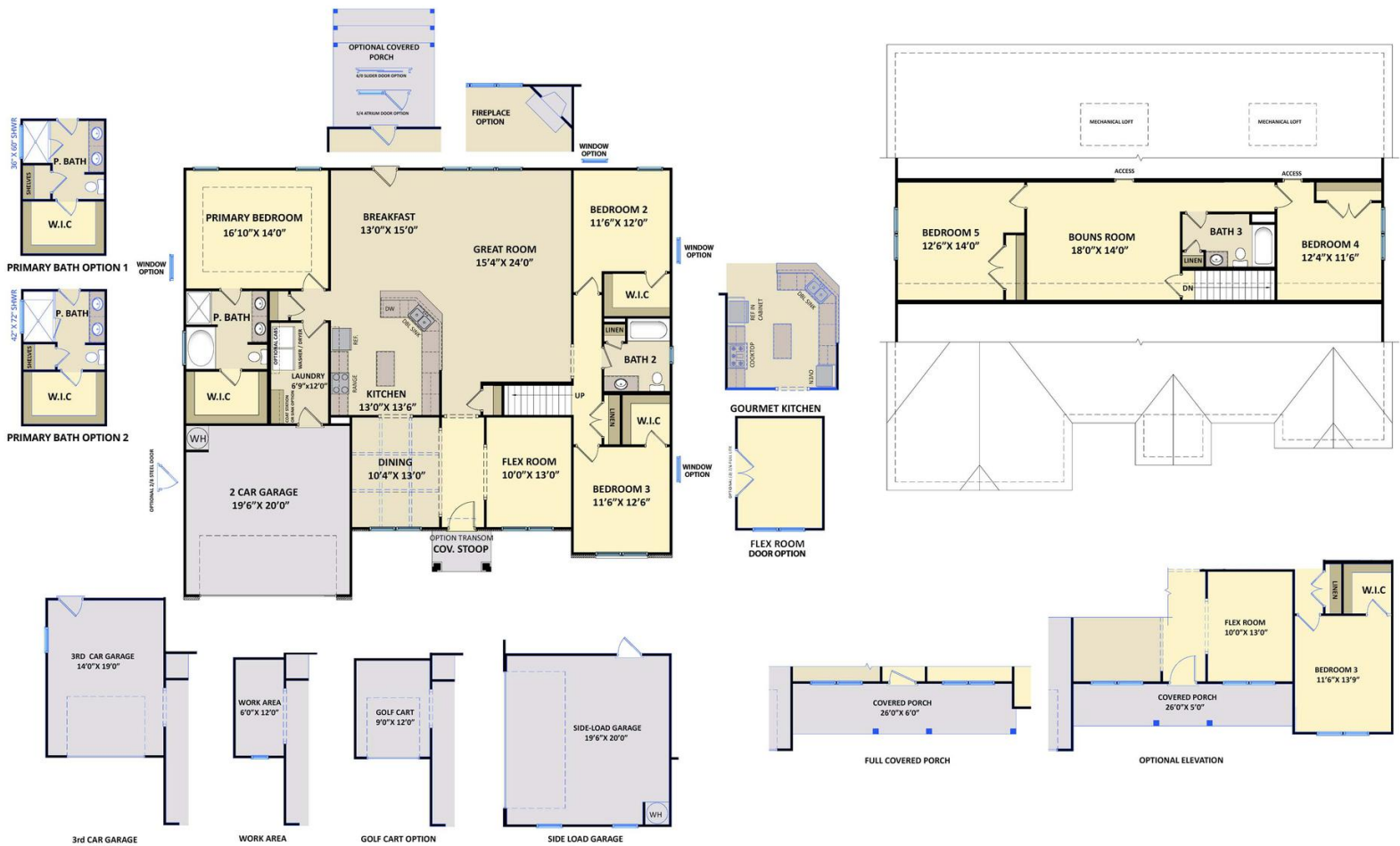
Elevation F

The Bladen

CC3107

FIRST FLOOR

SECOND FLOOR



Prices, plans, dimensions, features, specifications, materials, and availability of homes or communities are subject to change without notice or obligation. Illustrations are artists depictions only and may differ from completed improvements. All prices subject to change without notice. Please contact your sales associate before writing an offer.

