



1016 Black Ash Run
Wilmington, NC 28409

TARIN WOODS - ROANOKE

CONTACT OUR NEW HOME SPECIALISTS

MAGGIE & JENN

Call Us @ 910-405-8311

maggie@cavinessandcates.com



Priced

\$469,900

Elevation C

3,156 Sq Ft

2.0 Story

5 Beds

3.0 Baths

2 Car Garage

Master Bedroom: Up

About 1016 Black Ash Run

- Great Room with gas fireplace and built-in cabinets
- Elegant formal dining room with stunning coffered ceiling and wainscoting detail
- Kitchen features granite countertops, subway tile backsplash, white shaker cabinets, stainless steel microwave, dishwasher, and gas cooktop range, satin nickel finishes, sink overlooking the great room, breakfast area, spacious butler's pantry, and walk-in pantry with frosted glass door and wooden shelves
- Guest room on 1st floor with access to hall bath with tub/shower combination and tile flooring

...Read More Online

About The Community.

Welcome to a community that has it all, located right here in Wilmington, NC.

Tarin Woods offers the livability and comfort that today's buyers desire. Relax at our community pool, throw a party at the clubhouse, and enjoy our children's play area. Choose from a variety of Available Homes to fit your needs. Just 10 minutes to area beaches, 15 minutes to Historic Downtown.

...Read More Online

Prices, plans, dimensions, features, specifications, materials, and availability of homes or communities are subject to change without notice or obligation. Illustrations are artists depictions only and may differ from completed improvements. All prices subject to change without notice. Please contact your sales associate before writing an offer.



The Roanoke
CC3156

FIRST FLOOR

SECOND FLOOR

REAR COVERED PORCH OPTION



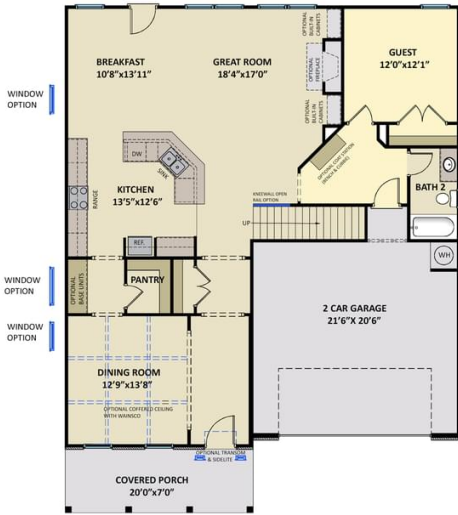
OPTIONAL 6/0 SLIDING DOOR



OPTIONAL 5/4 ATRIUM DOOR



GOURMET KITCHEN OPTION



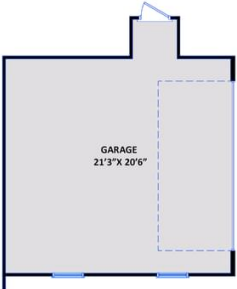
OPTIONAL STEEL DOOR



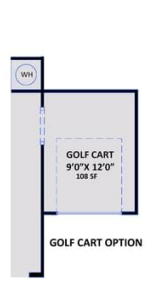
MASTER BATH OPTION 1



MASTER BATH OPT. 2



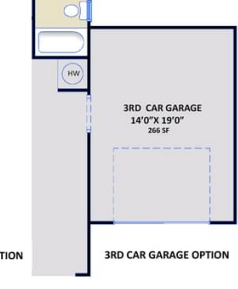
SIDE LOAD GARAGE OPTION



GOLF CART OPTION



WORK AREA OPTION



3RD CAR GARAGE OPTION