

**Priced****\$444,900**

Elevation TW - ARCHIVED 2/16/22

2,927 Sq Ft

2.0 Story

4 Beds

3.5 Baths

2 Car Garage

Primary Bedroom: Down

About 5904 Sweet Gum Drive

- First-floor master suite with beautiful tray ceiling with crown molding, walk-in closet with sweater tower and wood shelving, his and hers sinks with granite vanity, framed mirrors, tile shower, tile flooring, linen closet, and private water closet
- Great room with gas log fireplace and built-in shelving; access to covered porch and grill patio
- Two-piece crown molding throughout main living space and cased openings
- Kitchen with dining area features granite countertops, subway tile backsplash, white shaker cabinets, stainless steel microwave, dishwasher, and gas cooktop range, island with sink

[...Read More Online](#)**About The Community.****Final Opportunity!**

Welcome to a community that has it all, located right here in Wilmington, NC.

Tarin Woods offers the livability and comfort that today's buyers desire. Relax at our community pool, throw a party at the clubhouse, and enjoy our children's play area. Choose from a variety of Available Homes to fit your needs. Just 10 minutes to area beaches, 15 minutes to Historic Downtown.

[...Read More Online](#)

Prices, plans, dimensions, features, specifications, materials, and availability of homes or communities are subject to change without notice or obligation. Illustrations are artists depictions only and may differ from completed improvements. All prices subject to change without notice. Please contact your sales associate before writing an offer.



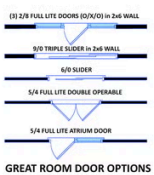
ARCHIVED 1-7-2022

The Page

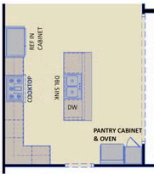
CC2927

FIRST FLOOR

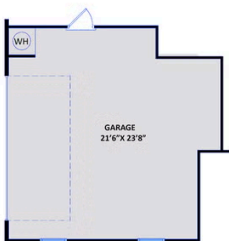
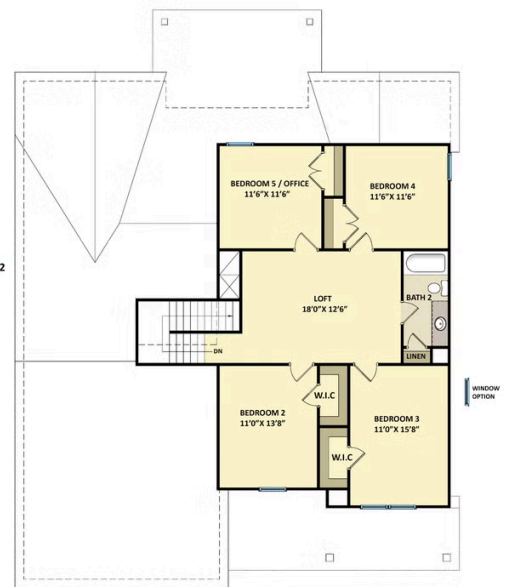
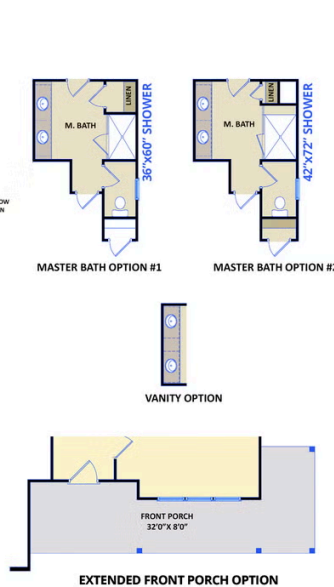
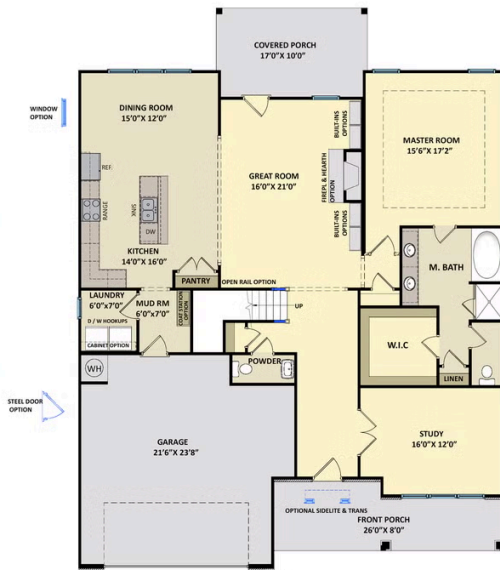
SECOND FLOOR



GREAT ROOM DOOR OPTIONS



GOURMET KITCHEN



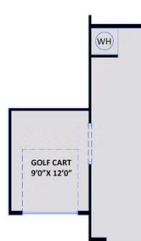
SIDE-LOAD GARAGE



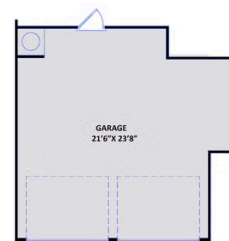
3RD CAR GARAGE



WORK AREA @ GARAGE



GOLF CART GARAGE



TWO-DOOR GARAGE



DOUBLE SINK OPTION



BEDROOM #4 BATH OPTION