



2,480 Sq. Ft.

2.5 Stories

4 - 5 Bed

2.5 Bath

2 - 3 Garage

Master Bed: Up

About Kendleton

- Formal dining room with coffered ceiling and wainscoting detail option.
- Kitchen with breakfast area, island and butler pantry; access to optional covered porch or Carolina Room* and screened porch.
- Great Room with fireplace.
- Half bath with pedestal sink and oval mirror.
- Optional bench/cubbies in garage entryway.
- 2nd floor features the master suite with tray ceiling option, two walk-in closets, garden tub and

...Read More Online



Elevation B



Elevation C



Elevation E

Prices, plans, dimensions, features, specifications, materials, and availability of homes or communities are subject to change without notice or obligation. Illustrations are artists depictions only and may differ from completed improvements. All prices subject to change without notice. Please contact your sales associate before writing an offer.

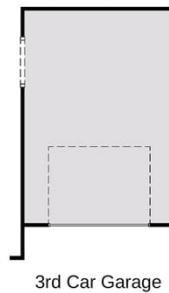
The Kendleton
CC2343

FIRST FLOOR



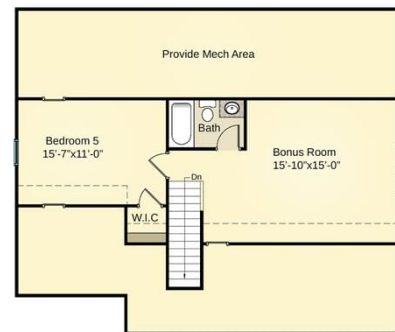
Gourmet Kitchen

Carolina Room Option

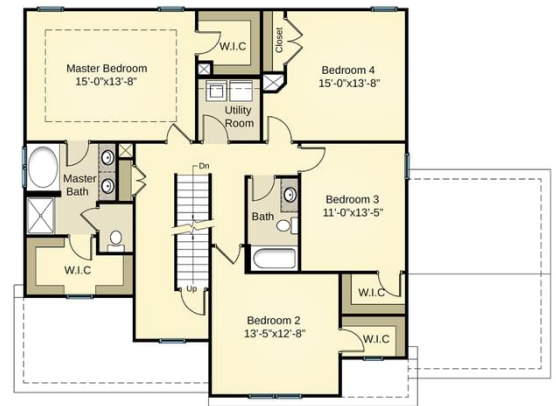


3rd Car Garage

THIRD FLOOR



SECOND FLOOR



Prices, plans, dimensions, features, specifications, materials, and availability of homes or communities are subject to change without notice or obligation. Illustrations are artists depictions only and may differ from completed improvements. All prices subject to change without notice. Please contact your sales associate before writing an offer.