



321 Gable End Court
Winterville, NC 28590

HOLLY GROVE - GRANVILLE

CONTACT OUR NEW HOME SPECIALISTS

MAGGIE & JESSICA

Call Us @ 910-405-8311

info@cavinessandcates.com



Priced

\$407,900

2,724 Sq Ft

2.0 Story

4 Beds

2.5 Baths

2 Car Garage

Primary Bedroom: Down

About 321 Gable End Court

- Great room with gas log fireplace with decorative mantle and granite surround in "Absolute Black".
- Covered porch creates the perfect outdoor living space and is easily accessible through the breakfast area.
- Formal dining room painted in Sherwin Williams "Mega Grieve" with coffered ceiling and picture frame wainscoting detail.
- Kitchen features granite countertops in "Santa Cecilia Light", subway tile backsplash in "Arctic White" set in a brick pattern, Antique White shaker cabinets with island painted in "Urbane Bronze",

...Read More Online

About The Community.

Convenient drive to Greenville, Ayden, and Winterville, Holly Grove is growing and this is the perfect time to find your new home. This new home community is in close proximity to Pitt Community College, the new Southwest bypass, which allows for easy access to the medical district, Vidant Medical Center & Brody School of Medicine, as well as Uptown Greenville & ECU Campus.

Your Caviness & Cates new home includes beautiful finishes, an in-house warranty, and thoughtfully designed spaces.

...Read More Online

Prices, plans, dimensions, features, specifications, materials, and availability of homes or communities are subject to change without notice or obligation. Illustrations are artists depictions only and may differ from completed improvements. All prices subject to change without notice. Please contact your sales associate before writing an offer.

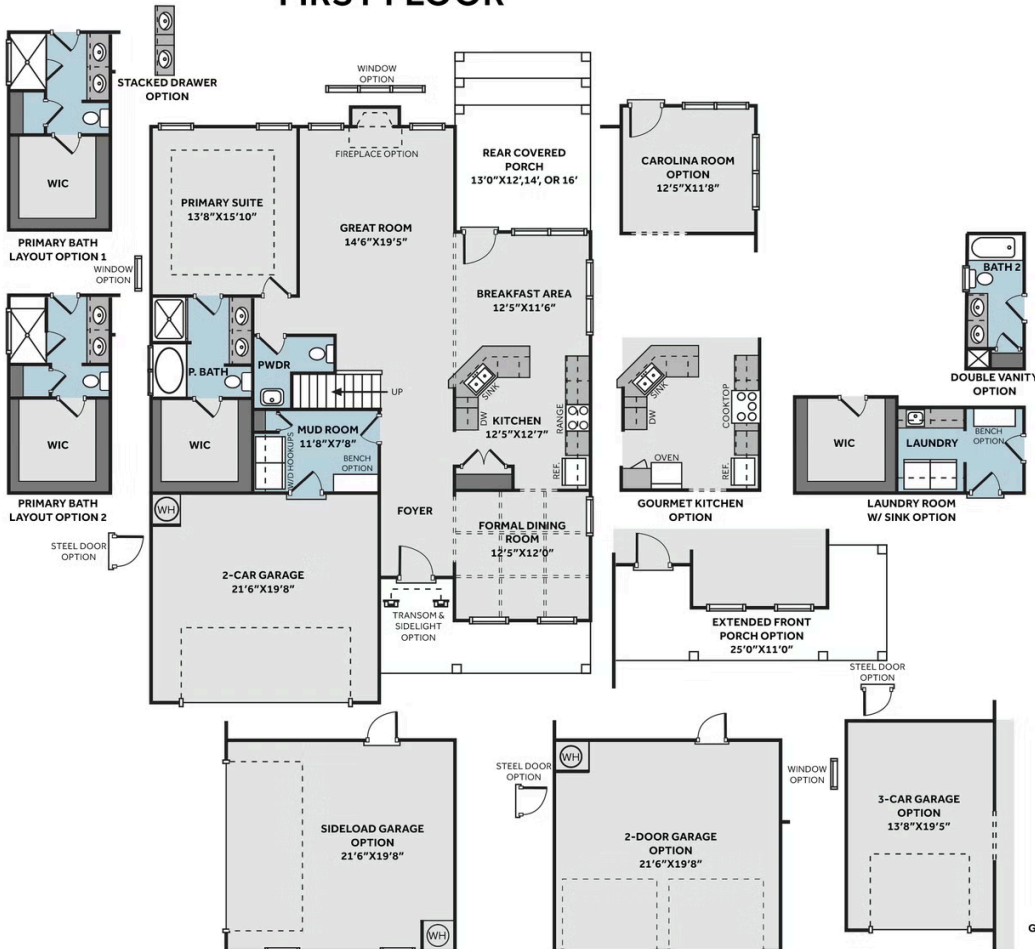


ARCHIVED 2/21/2025

THE GRANVILLE

CC2680

FIRST FLOOR



SECOND FLOOR

