



324 Holly Grove Drive
Winterville, NC 28590
HOLLY GROVE - ABERDEEN

CONTACT OUR NEW HOME SPECIALISTS
MAGGIE & JESSICA
Call Us @ 910-405-8311
info@cavinessandcates.com



Priced
\$261,105

Elevation D
2,234 Sq Ft
2.0 Story
3 Beds
2.5 Baths
2 Car Garage
Primary Bedroom: Up

About 324 Holly Grove Drive

- Office with barn door entry and walk-in-closet on first floor
- Eat-in kitchen features granite countertops, tile backsplash, white cabinets, stainless steel microwave, dishwasher, and gas range cooktop, satin nickel finishes, island with sink overlooking the great room, and corner pantry
- Covered porch creates the perfect outdoor space
- Great room with gas log fireplace
- Half bath with pedestal sink and oval mirror

...Read More Online

About The Community.

Convenient drive to Greenville, Ayden, and Winterville, Holly Grove is growing and this is the perfect time to find your new home. This new home community is in close proximity to Pitt Community College, the new Southwest bypass, which allows for easy access to the medical district, Vidant Medical Center & Brody School of Medicine, as well as Uptown Greenville & ECU Campus.

Your Caviness & Cates new home includes beautiful finishes, an in-house warranty, and thoughtfully designed spaces.

...Read More Online

Prices, plans, dimensions, features, specifications, materials, and availability of homes or communities are subject to change without notice or obligation. Illustrations are artists depictions only and may differ from completed improvements. All prices subject to change without notice. Please contact your sales associate before writing an offer.



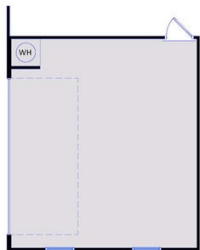
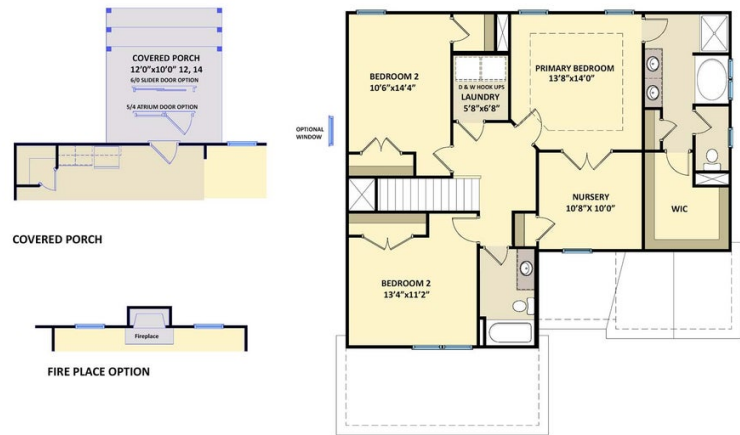
ARCHIVED 1/05/2024

The Aberdeen
CC2234

FIRST FLOOR



SECOND FLOOR



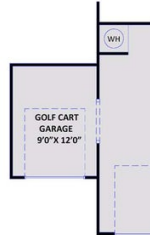
SIDE LOAD GARAGE



3RD CAR GARAGE



WORK SPACE GARAGE



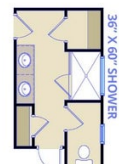
GOLF CART GARAGE



4th BEDROOM OPTION



HALL BATH DUAL SINK OPTION



PRIMARY BATH OPTION 1



PRIMARY BATH OPTION 2