



353 Holly Grove Drive
Winterville, NC 28590

HOLLY GROVE - DRAYTON

CONTACT OUR NEW HOME SPECIALISTS

MAGGIE & JESSICA

Call Us @ 910-405-8311

info@cavinessandcates.com



Priced

\$309,994

Elevation F - ARCHIVED 3/29/23

2,325 Sq Ft

2.0 Story

4 Beds

2.5 Baths

2 Car Garage

Primary Bedroom: Up

About 353 Holly Grove Drive

- Kitchen features granite countertops, arctic white subway tile backsplash, white shaker cabinets, stainless steel microwave, dishwasher, and gas cooktop range, satin nickel finishes, large island, corner pantry, and window over kitchen sink with views to the backyard
- Covered porch creates the perfect outdoor space
- Formal dining room with wainscoting detail and coffered ceiling
- Great room with gas log fireplace with decorative mantle and granite surround
- Half bath with pedestal sink and oval mirror

...Read More Online

About The Community.

Convenient drive to Greenville, Ayden, and Winterville, Holly Grove is growing and this is the perfect time to find your new home. This new home community is in close proximity to Pitt Community College, the new Southwest bypass, which allows for easy access to the medical district, Vidant Medical Center & Brody School of Medicine, as well as Uptown Greenville & ECU Campus.

Your Caviness & Cates new home includes beautiful finishes, an in-house warranty, and thoughtfully designed spaces.

...Read More Online

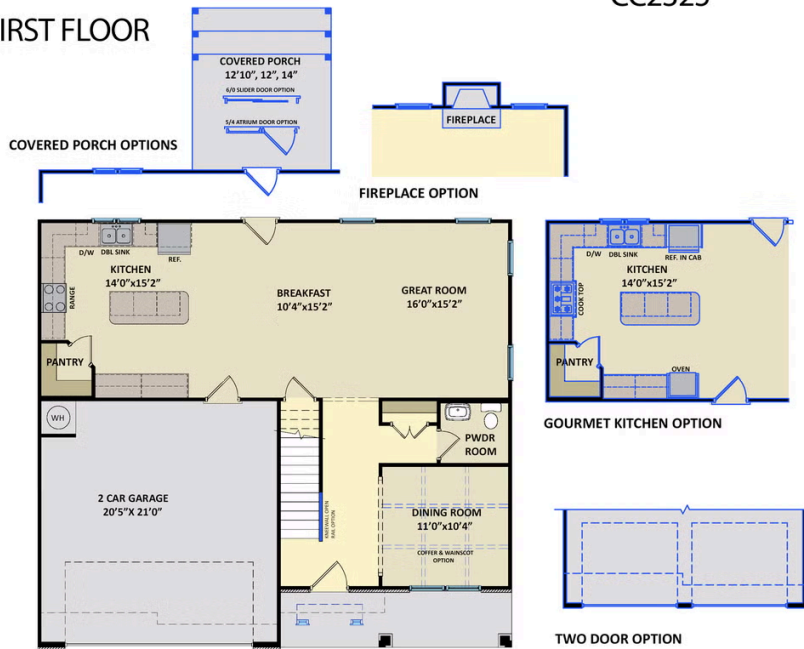
Prices, plans, dimensions, features, specifications, materials, and availability of homes or communities are subject to change without notice or obligation. Illustrations are artists depictions only and may differ from completed improvements. All prices subject to change without notice. Please contact your sales associate before writing an offer.



ARCHIVED 2021

The Drayton CC2325

FIRST FLOOR



SECOND FLOOR

