



440 Holly Grove Drive  
Winterville, NC 28590

**HOLLY GROVE - DRAYTON**

CONTACT OUR NEW HOME SPECIALISTS

**MAGGIE & JESSICA**

Call Us @ 910-405-8311

info@cavinessandcates.com



**Priced**

**\$379,051**

Elevation D

2,325 Sq Ft

2.0 Story

4 Beds

2.5 Baths

2 Car Garage

Primary Bedroom: Up

## About 440 Holly Grove Drive

- First floor with formal dining room painted in Sherwin Williams "Grays Harbor" with picture frame wainscoting detail and coffered ceiling.
- Great room with gas fireplace with decorative mantle and granite surround in "Absolute Black".
- Kitchen features island that is open to breakfast area and great room, white shaker cabinets, granite countertops in "Luna Pearl", subway tile backsplash in "Desert Gay" set in a brick pattern, and corner pantry; Stainless steel microwave, dishwasher and gas

...Read More Online

## About The Community.

Convenient drive to Greenville, Ayden, and Winterville, Holly Grove is growing and this is the perfect time to find your new home. This new home community is in close proximity to Pitt Community College, the new Southwest bypass, which allows for easy access to the medical district, Vidant Medical Center & Brody School of Medicine, as well as Uptown Greenville & ECU Campus.

Your Caviness & Cates new home includes beautiful finishes, an in-house warranty, and thoughtfully designed spaces.

...Read More Online

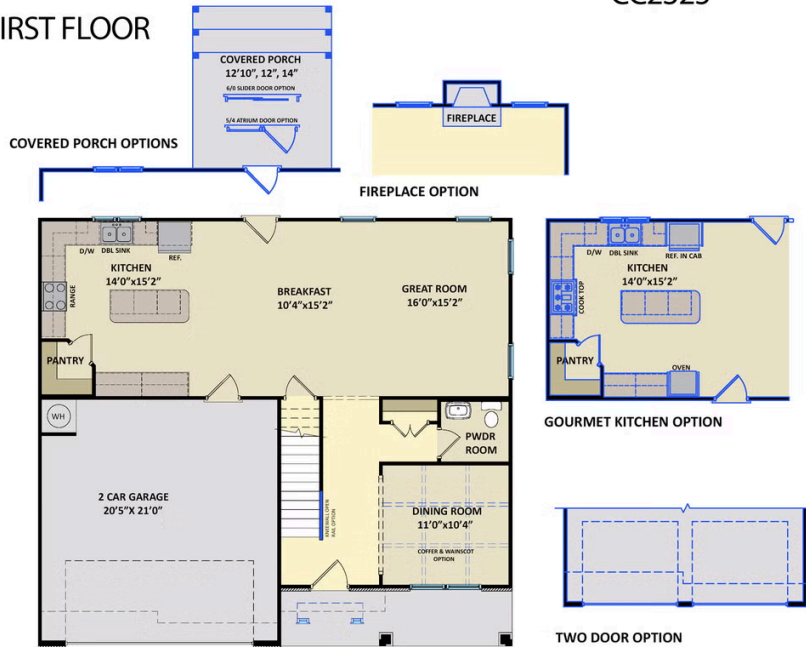
Prices, plans, dimensions, features, specifications, materials, and availability of homes or communities are subject to change without notice or obligation. Illustrations are artists depictions only and may differ from completed improvements. All prices subject to change without notice. Please contact your sales associate before writing an offer.



ARCHIVED 8/22/2023

**The Drayton**  
CC2325

**FIRST FLOOR**



**SECOND FLOOR**

