



465 Holly Grove Drive
Winterville, NC 28590
HOLLY GROVE - BAILEY

CONTACT OUR NEW HOME SPECIALISTS
MAGGIE & JESSICA
Call Us @ 910-405-8311
info@cavinessandcates.com



Priced
\$390,264

Elevation K
2,424 Sq Ft
2.0 Story
4 Beds
2.5 Baths
2 Car Garage
Primary Bedroom: Up

About 465 Holly Grove Drive

- Great room with gas log fireplace with decorative mantle and granite surround in "Absolute Black"
- Kitchen features granite countertop in "Santa Cecilia Light", subway tile backsplash in "Arctic White", Seattle Snow shaker cabinets, and island with sink overlooking the great room and breakfast nook area; Stainless steel microwave, dishwasher, and gas range.
- Spacious covered porch, perfect for entertaining.
- Half bath with pedestal sink, oval mirror, and tile flooring.
- All bedrooms on second floor with access to full bathroom with dual vanity and tub/shower

...Read More Online

About The Community.

Convenient drive to Greenville, Ayden, and Winterville, Holly Grove is growing and this is the perfect time to find your new home. This new home community is in close proximity to Pitt Community College, the new Southwest bypass, which allows for easy access to the medical district, Vidant Medical Center & Brody School of Medicine, as well as Uptown Greenville & ECU Campus.

Your Caviness & Cates new home includes beautiful finishes, an in-house warranty, and thoughtfully designed spaces.

...Read More Online

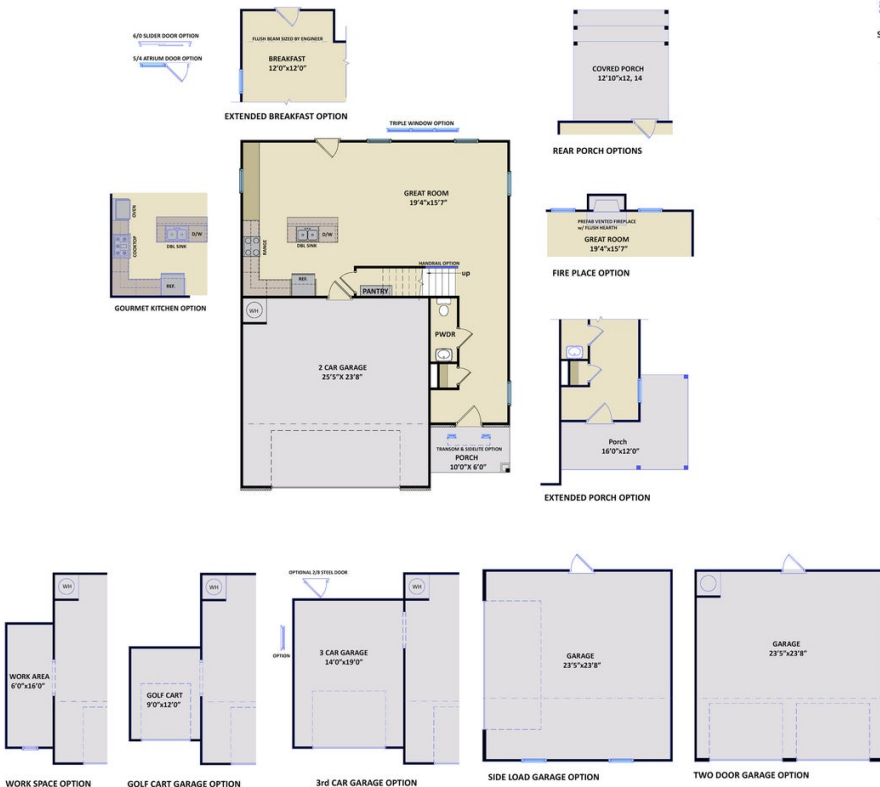
Prices, plans, dimensions, features, specifications, materials, and availability of homes or communities are subject to change without notice or obligation. Illustrations are artists depictions only and may differ from completed improvements. All prices subject to change without notice. Please contact your sales associate before writing an offer.



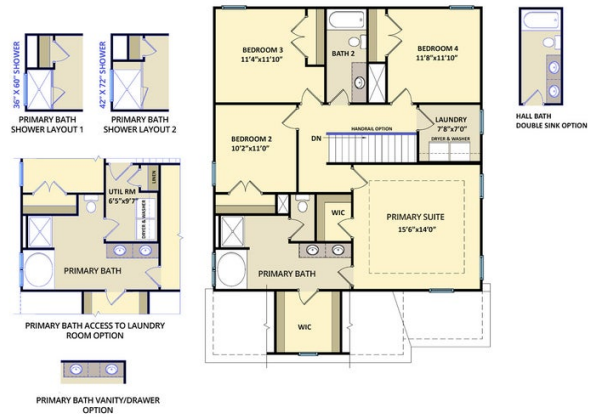
ARCHIVED 11/07/2023

The Bailey
CC2136

FIRST FLOOR



SECOND FLOOR



SECOND FLOOR WITH BONUS ROOM

