



476 Holly Grove Drive  
Winterville, NC 28590

**HOLLY GROVE - DRAYTON**

CONTACT OUR NEW HOME SPECIALISTS

**MAGGIE & JESSICA**

Call Us @ 910-405-8311

info@cavinessandcates.com



**Priced**

**\$364,100**

Elevation D

2,325 Sq Ft

2.0 Story

4 Beds

2.5 Baths

2 Car Garage

Primary Bedroom: Up

## About 476 Holly Grove Drive

- Kitchen features granite countertops in "Azul Platino", subway tile backsplash in "Arctic White", white shaker cabinets, large island, corner pantry, and window over kitchen sink with views to the backyard; Stainless steel microwave, dishwasher, and gas range.
- Covered porch creates the perfect outdoor space.
- Formal dining room painted in Sherwin Williams "Storm Cloud" with picture frame wainscoting detail and coffered ceiling.
- Great room with gas log fireplace with decorative mantle and granite surround in "Absolute Black".

...Read More Online

## About The Community.

Convenient drive to Greenville, Ayden, and Winterville, Holly Grove is growing and this is the perfect time to find your new home. This new home community is in close proximity to Pitt Community College, the new Southwest bypass, which allows for easy access to the medical district, Vidant Medical Center & Brody School of Medicine, as well as Uptown Greenville & ECU Campus.

Your Caviness & Cates new home includes beautiful finishes, an in-house warranty, and thoughtfully designed spaces.

...Read More Online

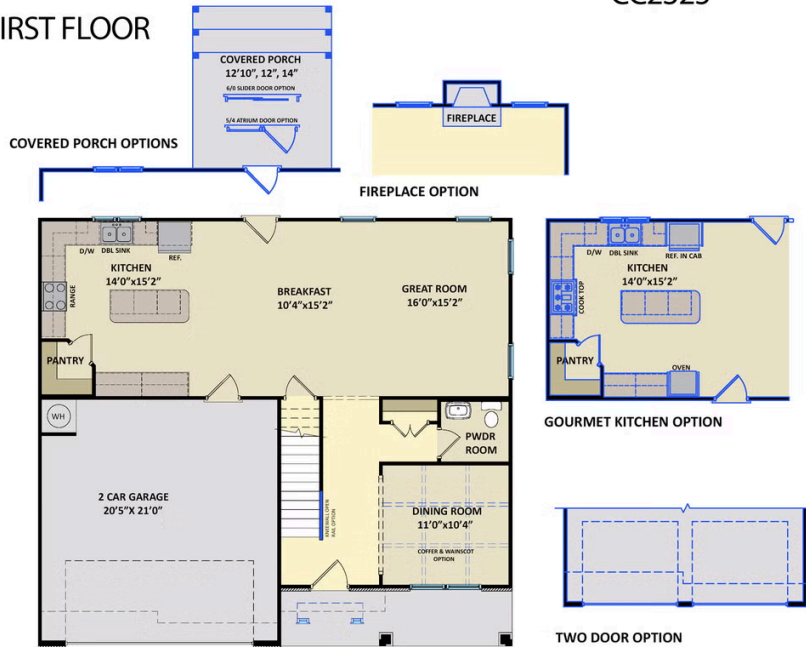
Prices, plans, dimensions, features, specifications, materials, and availability of homes or communities are subject to change without notice or obligation. Illustrations are artists depictions only and may differ from completed improvements. All prices subject to change without notice. Please contact your sales associate before writing an offer.



ARCHIVED 8/22/2023

**The Drayton**  
CC2325

**FIRST FLOOR**



**SECOND FLOOR**

