



Priced

\$368,540

ARCHIVED 7/06/2022 - Elevation F

2,355 Sq Ft

2.0 Story

4 Beds

2.5 Baths

2 Car Garage

Master Bedroom: Up

About 482 Holly Grove Drive

- The entrance of this 2 story home showcases a 2 story ceiling with a second-floor overlooking the entryway.
- Eat-in kitchen with large island and white shaker cabinets, "Santa Cecilia Light" granite countertops, "Arctic White" subway tile backsplash, walk-in pantry, built-in desk space with window over the kitchen sink; Stainless steel microwave, dishwasher, and gas range.
- Breakfast area with access to covered porch.
- Great room with gas fireplace featuring a decorative mantle and "Absolute Black" granite surround.

...Read More Online

About The Community.

Convenient drive to Greenville, Ayden, and Winterville, Holly Grove is growing and this is the perfect time to find your new home. This new home community is in close proximity to Pitt Community College, the new Southwest bypass, which allows for easy access to the medical district, Vidant Medical Center & Brody School of Medicine, as well as Uptown Greenville & ECU Campus.

Your Caviness & Cates new home includes beautiful finishes, an in-house warranty, and thoughtfully designed spaces.

...Read More Online

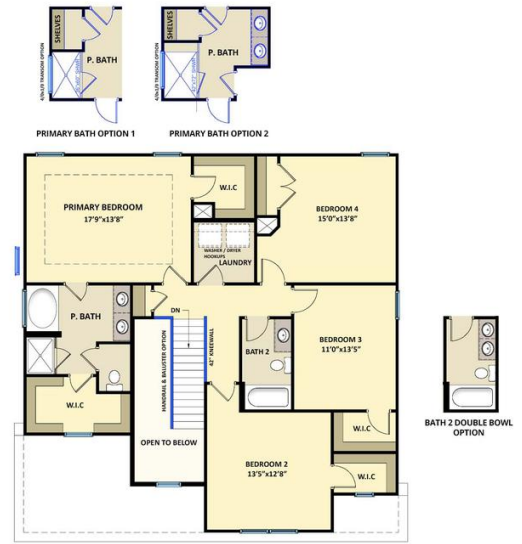
Prices, plans, dimensions, features, specifications, materials, and availability of homes or communities are subject to change without notice or obligation. Illustrations are artists depictions only and may differ from completed improvements. All prices subject to change without notice. Please contact your sales associate before writing an offer.

The Brunswick
CC2355

FIRST FLOOR



SECOND FLOOR



Prices, plans, dimensions, features, specifications, materials, and availability of homes or communities are subject to change without notice or obligation. Illustrations are artists depictions only and may differ from completed improvements. All prices subject to change without notice. Please contact your sales associate before writing an offer.

