



2728 Chalet Circle  
Winterville, NC 28590

VILLA GRANDE - BLADEN

CONTACT OUR NEW HOME SPECIALIST

**JENN HUNTOON**

Call Us @ 910-405-8311

jenn@cavinessandcates.com



**Priced**

**\$300,142**

Elevation C

3,107 Sq Ft

1.5 Story

5 Beds

3.0 Baths

2 Car Garage

Master Bedroom: Down

## About 2728 Chalet Circle

- This home plan features a large covered front porch and opens up to the foyer, access to the flex room on one side, and a formal dining room on the other with coffered ceiling and wainscoting detail
- This open kitchen features granite countertops, subway tile backsplash, white cabinets, stainless steel microwave, dishwasher, and smooth top range, brushed nickel finishes, a large center island, sink overlooking the great room, and breakfast area with access to the covered porch!
- Large great room with gas log fireplace perfect for entertaining!

...Read More Online

## About The Community.

Located within minutes of Winterville Schools this sidewalk community is in close proximity to the new SW Bypass providing a quick commute to Vidant Medical Center, East Carolina University Campus, Greenville, Ayden, Kinston and local retail and restaurants.

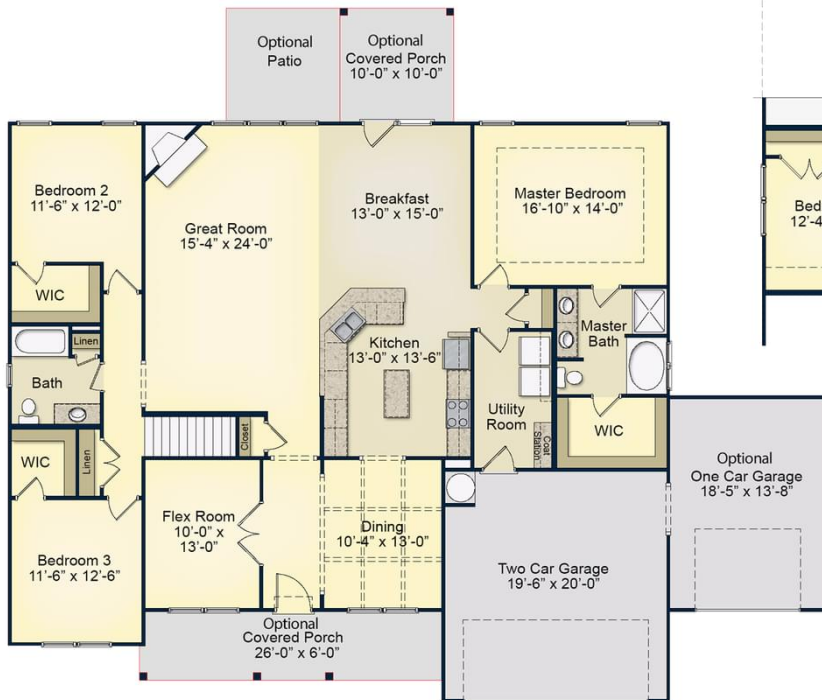
...Read More Online

Prices, plans, dimensions, features, specifications, materials, and availability of homes or communities are subject to change without notice or obligation. Illustrations are artists depictions only and may differ from completed improvements. All prices subject to change without notice. Please contact your sales associate before writing an offer.

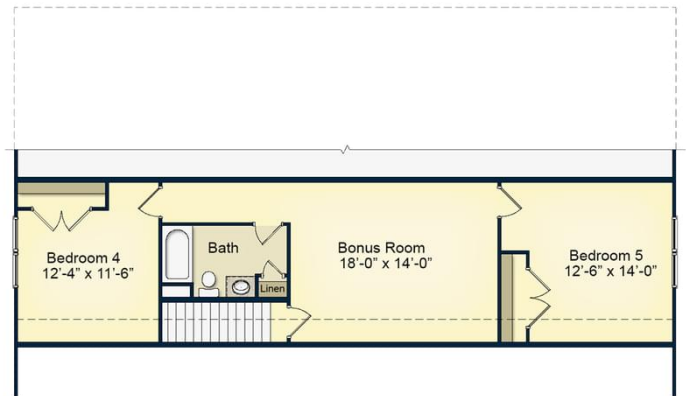


**The Bladen**  
CC3107

**FIRST FLOOR**



**SECOND FLOOR**



Prices, plans, dimensions, features, specifications, materials, and availability of homes or communities are subject to change without notice or obligation. Illustrations are artists depictions only and may differ from completed improvements. All prices subject to change without notice. Please contact your sales associate before writing an offer.