



30 Cinnamon Teal Way  
Youngsville, NC 27596

**BALLINGER FARMS - BLADEN**

CONTACT OUR NEW HOME SPECIALISTS

**MAGGIE & JESSICA**

Call Us @ 910-405-8311

info@cavinessandcates.com



**Priced**

**\$584,932**

Elevation D

3,142 Sq Ft

1.5 Story

4 Beds

3.0 Baths

3 Car Garage

Master Bedroom: Down

## About 30 Cinnamon Teal Way

- Formal dining room painted in Sherwin Williams "Mega Griege" with coffered ceiling and picture frame wainscoting detail.
- Formal living room/flex room with french door entry.
- Great room with corner gas log fireplace with decorative mantle and granite surround in "Absolute Black".
- Covered deck with grill deck creates the perfect outdoor space and is easily accessible through the breakfast area.

...Read More Online

## About The Community.

Enjoy the quiet life with a direct route to both downtown Raleigh and charming downtown Wake Forest in Ballinger Farms. This established community features Caviness & Cates new construction homes on an array of wooded, spacious homesites from ½ to over 1 acre and home plans with 2 and 3 car garages. Find your place to call home in Ballinger Farms!

...Read More Online

Prices, plans, dimensions, features, specifications, materials, and availability of homes or communities are subject to change without notice or obligation. Illustrations are artists depictions only and may differ from completed improvements. All prices subject to change without notice. Please contact your sales associate before writing an offer.

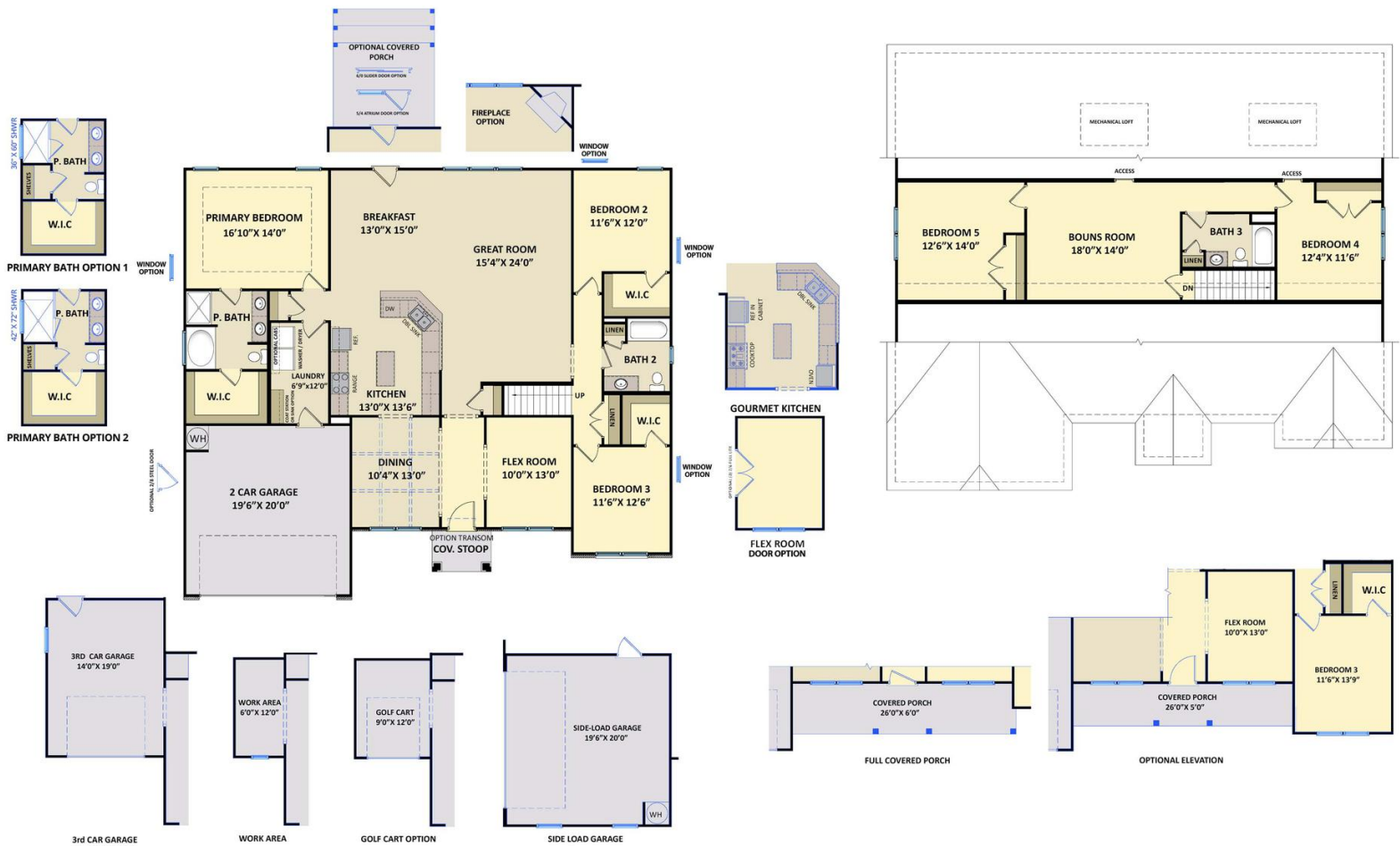


**The Bladen**

CC3107

**FIRST FLOOR**

**SECOND FLOOR**



Prices, plans, dimensions, features, specifications, materials, and availability of homes or communities are subject to change without notice or obligation. Illustrations are artists depictions only and may differ from completed improvements. All prices subject to change without notice. Please contact your sales associate before writing an offer.

