



35 Cinnamon Teal Way  
Youngsville, NC 27596

**BALLINGER FARMS - TRENT**

CONTACT OUR NEW HOME SPECIALISTS

**MAGGIE & JESSICA**

Call Us @ 910-405-8311

info@cavinessandcates.com



**Priced**

**\$554,038**

Elevation F

3,100 Sq Ft

2.0 Story

4 Beds

3.5 Baths

3 Car Garage

Master Bedroom: Down

## About 35 Cinnamon Teal Way

- Enter this home from the spacious covered front porch.
- Open great room with gas log fireplace with decorative mantle and granite surround in "Absolute Black".
- Covered deck with grill deck creates the perfect outdoor living space and is easily accessible through the great room..
- Kitchen features granite countertops in "Santa Cecilia Light", subway tile backsplash in "Arctic White" set in a brick pattern, Seattle "Snow" shaker cabinets, island with sink overlooking the great

...Read More Online

## About The Community.

Enjoy the quiet life with a direct route to both downtown Raleigh and charming downtown Wake Forest in Ballinger Farms. This established community features Caviness & Cates new construction homes on an array of wooded, spacious homesites from ½ to over 1 acre and home plans with 2 and 3 car garages. Find your place to call home in Ballinger Farms!

...Read More Online

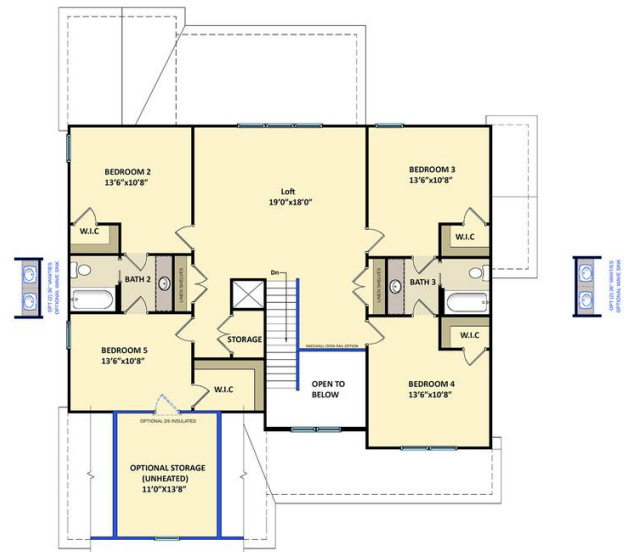
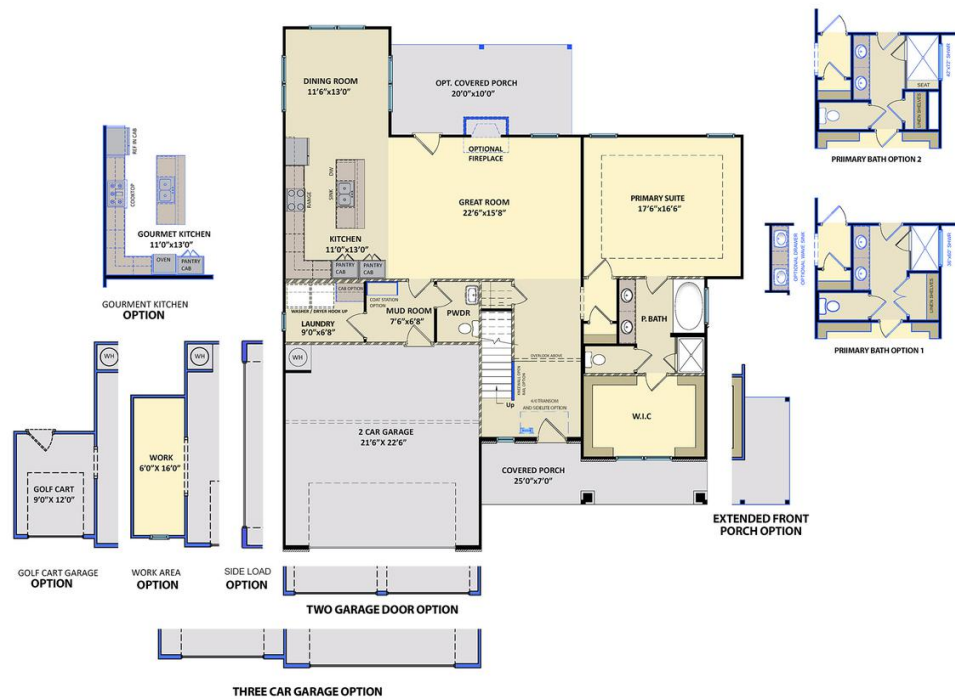
Prices, plans, dimensions, features, specifications, materials, and availability of homes or communities are subject to change without notice or obligation. Illustrations are artists depictions only and may differ from completed improvements. All prices subject to change without notice. Please contact your sales associate before writing an offer.



**The Trent**  
CC3100

FIRST FLOOR

SECOND FLOOR



Prices, plans, dimensions, features, specifications, materials, and availability of homes or communities are subject to change without notice or obligation. Illustrations are artists depictions only and may differ from completed improvements. All prices subject to change without notice. Please contact your sales associate before writing an offer.

