



55 Cinnamon Teal Way
Youngsville, NC 27596

BALLINGER FARMS - BLADEN

CONTACT OUR NEW HOME SPECIALISTS

MAGGIE & JESSICA

Call Us @ 910-405-8311

info@cavinessandcates.com



Priced

\$540,000

ARCHIVED 7/5/2022 - Elevation F

3,142 Sq Ft

1.5 Story

4 Beds

3.0 Baths

3 Car Garage

Primary Bedroom: Down

About 55 Cinnamon Teal Way

Move into this home in 2022!

- Formal dining room painted in Sherwin Williams "Debonair" with coffered ceiling and picture frame wainscoting detail.
- Formal flex room with french door entry.
- Great room with corner gas fireplace with decorative mantle and granite surround in "Steel Grey".
- Kitchen open to great room with breakfast area and island, dovetail shaker cabinets, granite countertops in "Luna Pearl", and subway tile backsplash in "Arctic White" set in a brick pattern;

...Read More Online

About The Community.

Enjoy the quiet life with a direct route to both downtown Raleigh and charming downtown Wake Forest in Ballinger Farms. This established community features Caviness & Cates new construction homes on an array of wooded, spacious homesites from ½ to over 1 acre and home plans with 2 and 3 car garages. Find your place to call home in Ballinger Farms!

...Read More Online

Prices, plans, dimensions, features, specifications, materials, and availability of homes or communities are subject to change without notice or obligation. Illustrations are artists depictions only and may differ from completed improvements. All prices subject to change without notice. Please contact your sales associate before writing an offer.

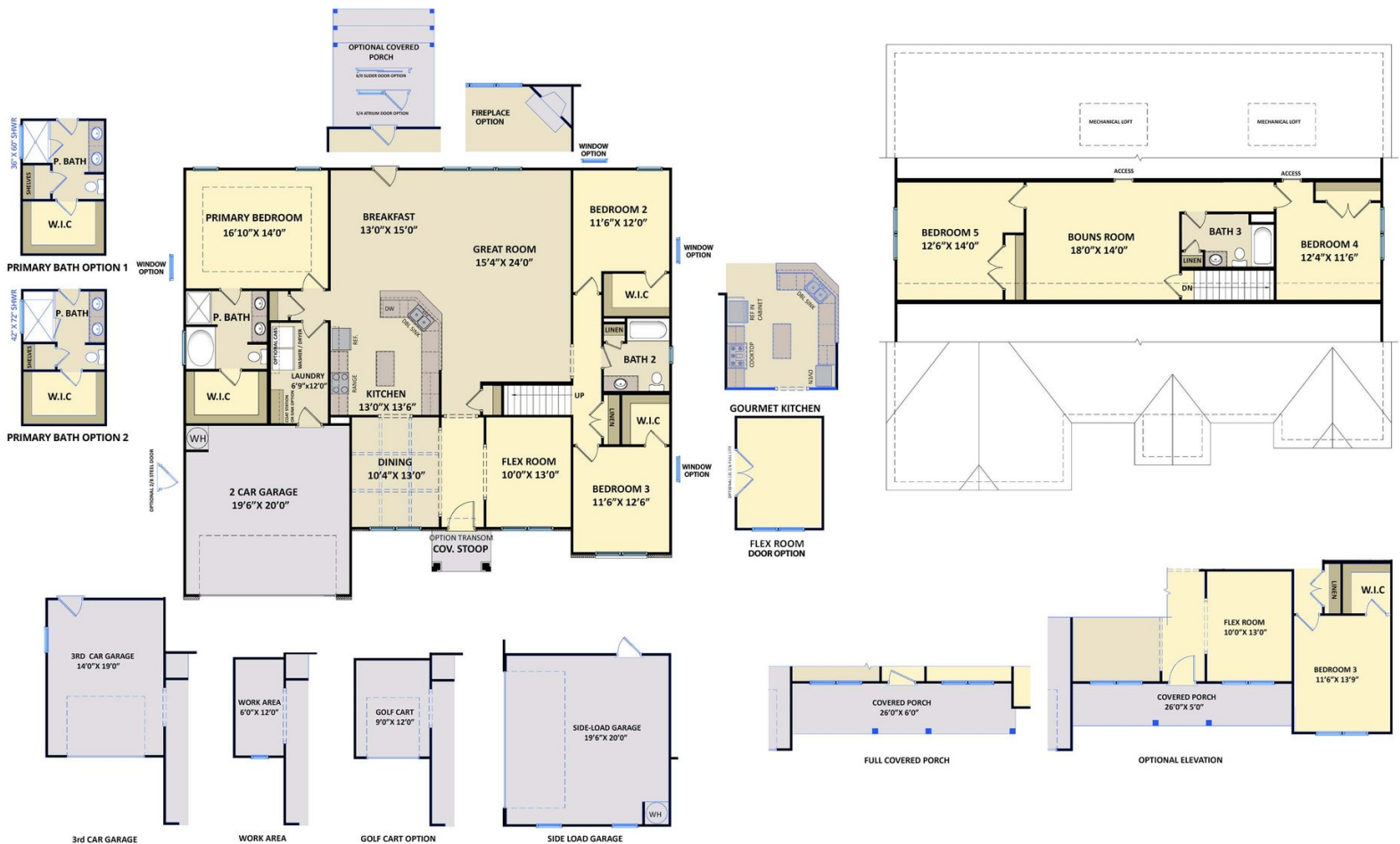


ARCHIVED 11/08/2023

The Bladen
CC3107

FIRST FLOOR

SECOND FLOOR



Prices, plans, dimensions, features, specifications, materials, and availability of homes or communities are subject to change without notice or obligation. Illustrations are artists depictions only and may differ from completed improvements. All prices subject to change without notice. Please contact your sales associate before writing an offer.

